



## PRODUCT DATA SHEET

**OMEGA PLASTO** Tape

To guarantee air and wind-tightness for the skin of a construction it must have the appropriate foils or panel materials providing a permanent seal at overlaps, gaps, joints and penetration points. OMEGA PLASTO Tape is an expandable butyl-rubber tape with a fleece base that can be plastered and painted over. The adhesive area has a split, asymmetrical PE backing. The liner split enables precise application at intersections and in corner areas. Amongst other sealing applications, the adhesive tape is used to make a second drainage level below the window sill.

**FIELD OF APPLICATION**

- joints on masonry that can be plastered or painted over
- can be used to seal base (load condition 'non-pressurizing water')
- in accordance with ÖNORM B3692 standard and directive 'Base Connection in Timber Construction'
- second water-bearing layer
- base, also in connection with OMEGA PoBit Sealing Compound
- cables and pipes (Curves)
- interior and exterior corners (flexibility)
- covering corners
- suitable for chimney and roof-window joints (formation of corners)
- for quick and simple creation of a second water-bearing level below the window sill
- for outdoor use

**ADVANTAGES**

- can be plastered and painted over
- split liner
- high adhesive properties of Butyl adhesive
- unevenness in substrate is compensated by the thick adhesive layer
- water-tight, elastic
- suitable for low temperatures
- adheres to bitumen using primer spray
- window sill adhesion possible directly with UNI MS Sealant Adhesive

**RECOMMENDED PRODUCTS**

UNI MS Sealant Adhesive



UNI SPRAY Primer Spray



AIRSTOP ROLL Pressing Roller



AIRSTOP RAK Plastic Squeegee

**AVAILABLE IN THE FOLLOWING DIMENSIONS**

Roll width	75 mm	100 mm	160 mm	200 mm	250 mm	300 mm	450 mm
Roll length	25 m	25 m	25 m	25 m	25 m	20 m	15 m
Split liner	30/45	30/70	30/130	30/170	30/220	30/120/150	30/210/210
Carton content	4 Rolls	2 Rolls	2 Rolls	1 Roll	1 Roll	1 Roll	1 Roll

**PRODUCT DATA**

**Material composition** Butyl-rubber adhesive tape combined with non woven fabric

**Thickness** 0,8 mm

**Colour** Grey, with white fleece

**Temperature resistance - Standard** -40 °C - 80 °C

**UV-resistance** 4 months

**Working temperature** -5 °C - 40 °C

**Shelf life** 2 years

**Storage** Cool and dry

**Fire performance** E

# OMEGA PLASTO Tape

## INFO

The materials used must be free from dust and grease and substrates must be dry and supporting.

The tape has the function of sealant and not of a strong connector.

On highly porous and very absorbent substrates such as concrete, plaster, untreated steel or raw wood, we recommend pre-treatment of the substrate with our ISOCELL Primers.

OMEGA PLASTO Tape must adhere to the entire surface. Gaps > 5mm should be backed.

## ( ! )

Butyl and bitumen tapes have a high inherent weight. The tape must be mechanically secured in case of installation in projecting areas e.g. ceilings, cantilevers and soffit areas, where gravity acts directly on the tape.

Edges can be implemented very well without voids using the pressing doctor blade. On rough and uneven substrates, adhesion is achieved over the entire surface using the soft AIRSTOP ROLL pressing roller made of cellular rubber.

## APPLICATION AS SECOND DRAINAGE LEVEL

The narrow side of OMEGA PLASTO Window Tape is fixed to the lower area of the window frame and attached around the corners. The tape should be extended horizontally approx. 6 cm in the reveal. Then the wide liner is pulled off in order to attach the tape to the substrate. Excess material can simply be cut off and we recommend leaving a small extra length as drainage area or for attachment of plastering profiles.

On highly porous and very absorbent substrates such as concrete, plaster, untreated steel or raw wood, we recommend pre-treatment of the substrate with our ISOCELL Primers.

## (1)

Cut off the window tape allowing approx. 12 cm excess. Pull off the narrow liner from the adhesive strip and carefully press the adhesive strip onto the lower window frame. Direct bonding of the window sill is possible with UNI MS Adhesive Sealant.

## (2)

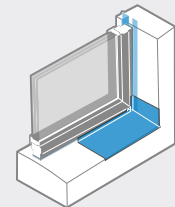
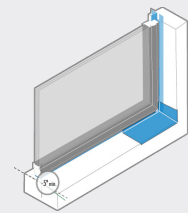
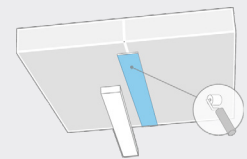
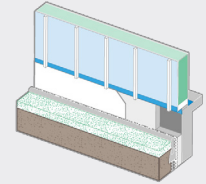
Pull up the window tape approx. 6 cm at both sides of

## (3)

Now pull off the second, wider liner and press the adhesive surface of the tape onto the lower window reveal, working from the centre and working to the left and to the right. While doing so press the flexible tape carefully into the corners and edges and pull up at the sides of the reveal. The edges can be implemented very well without voids using the pressing doctor blade.

## (4)

When the tape has been cleanly fixed in one piece and worked into the corners a second water-bearing level results on which to mount the window sill. The window sill can be adhered directly to the non-woven surface with the UNI MS Adhesive Sealant.



### ISOCELL GmbH & Co KG

Gewerbestraße 9  
5202 NEUMARKT AM WALLERSEE | Österreich  
Tel.: +43 6216 4108 | Fax: +43 6216 7979  
office@isocell.at

### ISOCELL SCHWEIZ AG

Herbergstrasse 29  
9524 ZUZWIL | Suisse /Schweiz  
Tel.: +41 71 940 06 72  
office@isocell.ch

### ISOCELL FRANCE

170 Rue Jean Monnet | ZAC de Prat Pip Sud  
29490 GUIPAVAS | France  
Tél.: +33 2 98 42 11 00 | Fax: +33 2 98 42 11 99  
contact@isocell-france.fr

### ISOCELL BUREEL BELGIË

Außenborner Weg 1 | Schoppen  
4770 AMEL | Belgique  
Tel.: +32 80 39 90 58 | Fax: +32 80 39 97 68  
office@isocell.be

### ISOCELL Sverige AB

Köpsvängen 10  
168 67 BROMMA | Sverige  
Tel.: +46 10 130 25 00  
info@isocell.se

**ISOCELL**  
www.isocell.com