

MODULAR ROOFS FAMILY.

We've create it from steel - one of the most durable and eco-friendly materials on earth. Our modular roof consists of many sheets, which are pieced together on the roof, just like fitting a puzzle piece in place. The roof sheets are compact and light, and their transport and assembly are a pleasure. This lets you save time and money, which can be spent on matters that are really important. Do you remember your childhood dreams? It's time to make them come true. Be bald!



Modular roof sheets Venecja



Modular roof sheets Como



Modular roof sheets Murano



Modular roof sheets Bella Sara



Modular roof sheets Rialto



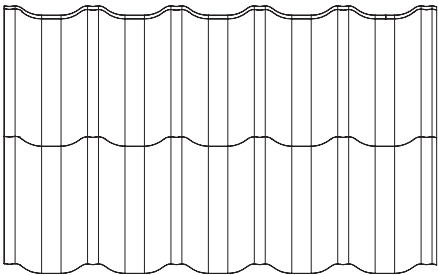
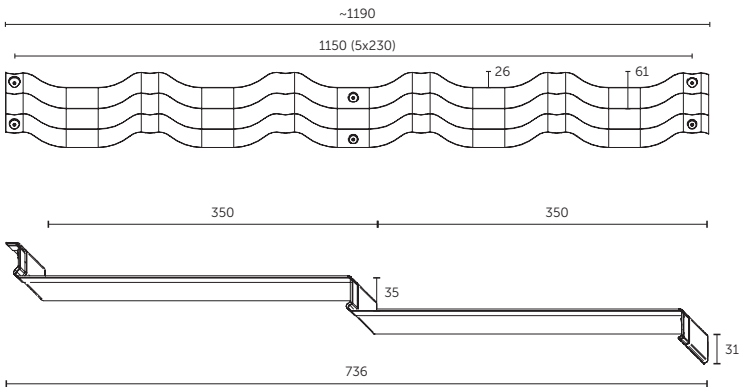
Modular roof sheets Ferrara







INSPIRED BY
ITALIAN STYLE.



Total width of the sheet:	1190 mm
Effective width of the sheet:	1150 mm
Width between wave peaks:	230 mm
Total width of the sheet:	736 mm
Effective length of the sheet:	700 mm
Module length:	350 mm
Total height:	61 mm
Height of the embossment:	35 mm
Wave height:	26 mm
Covering area of the sheet:	0,805 m ²
Sheet thickness:	0,5 mm
Zinc coat:	min. 275 g/m ²
Sheet weight:	max 3,7 kg
Pallet size:	1200 x 800 x 940 mm
Sheets per pallet:	350 pcs.
Layers/sheets per pallet:	10/35 pcs.
Effective m ² per pallet:	281,75 m ²
Pallet weight:	~1320 kg
Minimum roof pitch:	9°



**STRENGTHENED
VERTICAL FOLDS**



**TUCKED-DOWN
BOTTOM EDGE**



**PRE-DRILLED
MOUNTING
HOLES**

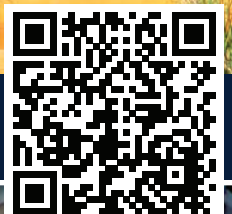


Product have received EUIPO registration certificate

Available coatings: X-Matt GreenCoat Crown BT, D-Matt, IDEAL-SATIN GreenCoat Pural BT, IDEAL-MATT GreenCoat Pural BT matt



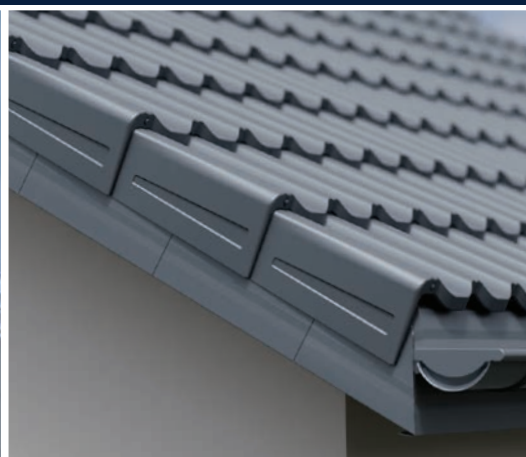
DEDICATED ACCESSORIES



SEE MORE



Ridge cap GS-LUX
Stop end ZP-LUX



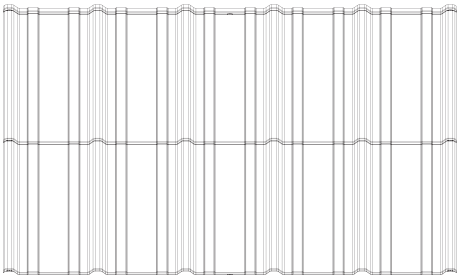
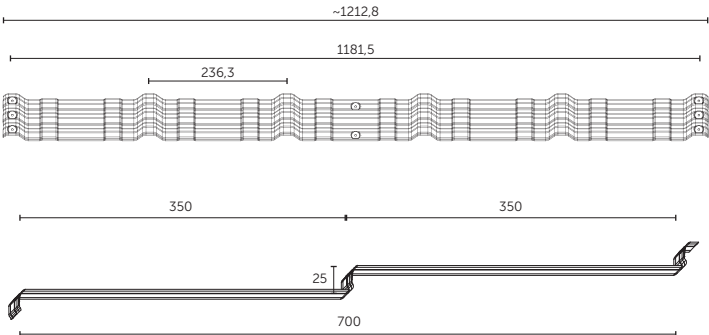
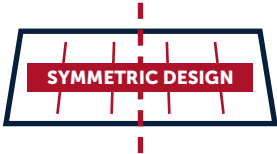
Dry verge Venecja
Drift - Universal bottom modular barge flashing



Stop end
ZS-LUX



THE FUTURE OF ROOF AESTHETICS



The total width of the sheet	1216 mm
ArcelorMittal:	1220 mm
The total width of the sheet SSAB:	1182 mm
Effective width of the sheet:	25 mm
Height of the embossments:	10 mm
Wave height:	35 mm
Overall height:	725 mm
The Total length of the sheet:	700 mm
Effective length of the sheet:	350 mm
Module length:	237 mm
Width between wave peaks:	0,827 m²
Covering area of the sheet:	3,7 kg
Weight sheet:	291,104 m²
Quantity of m² effective on the palette:	352 pcs.
Quantity of sheets per pallet:	11/32 pcs.
Number of layers / sheets per pallet:	min. 275 g/m²
Zinc coating:	1235 x 800 x 850 mm
Palette size:	~1350 kg
Pallet weight:	0,5 mm
Sheet thickness:	9° (15%)
Minimal roof slope:	>25%
Recommended roof slope:	



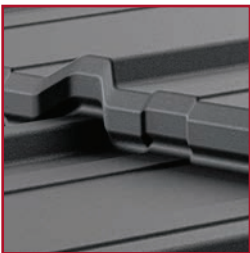
STRENGTHENED VERTICAL FOLDS



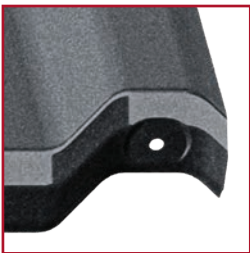
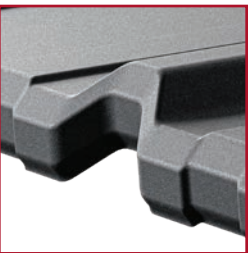
TUCKED-DOWN BOTTOM EDGE



PRE-DRILLED MOUNTING HOLES



DOUBLE RIB BENDING



Product have received EUIPO registration certificate

Available coatings: X-Matt GreenCoat Crown BT, D-Matt, IDEAL-SATIN GreenCoat Pural BT, IDEAL-MATT GreenCoat Pural BT matt



DEDICATED ACCESSORIES



SEE MORE



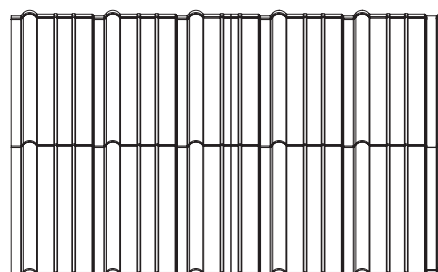
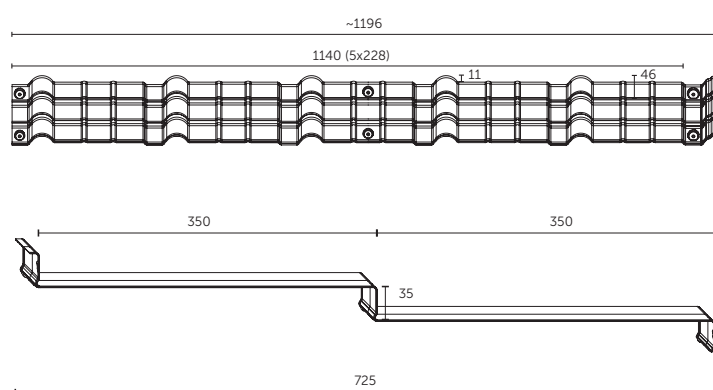
Drift - Universal outer modular barge flashing
Drift - Universal bottom modular barge flashing



Ridge cap GSC-TOP



AN ORIGINAL, INSPIRING DESIGN.



Total width of the sheet:	1196 mm
Effective width of the sheet:	1140 mm
Width between wave peaks:	228 mm
Total length of the sheet:	725 mm
Effective length of the sheet:	700 mm
Module length:	350 mm
Total height:	46 mm
Height of the embossment:	35 mm
Wave height:	11 mm
Covering area of the sheet:	0,798 m ²
Sheet thickness:	0,5 mm
Zinc coat:	min. 275 g/m ²
Sheet weight:	max 3,7 kg
Pallet size:	1200 × 800 × 1040 mm
Sheets per pallet:	319 pcs.
Layers/sheets per pallet:	11/29 pcs.
Effective m ² per pallet:	254,56 m ²
Pallet weight:	~1200 kg
Minimum roof pitch:	9°



**STRENGTHENED
VERTICAL FOLDS**



**TUCKED-DOWN
BOTTOM EDGE**



**PRE-DRILLED
MOUNTING
HOLES**



Product have received EUIPO registration certificate

Available coatings: X-Matt GreenCoat Crown BT, D-Matt,
IDEAL-SATIN GreenCoat Pural BT, IDEAL-MATT GreenCoat Pural BT matt



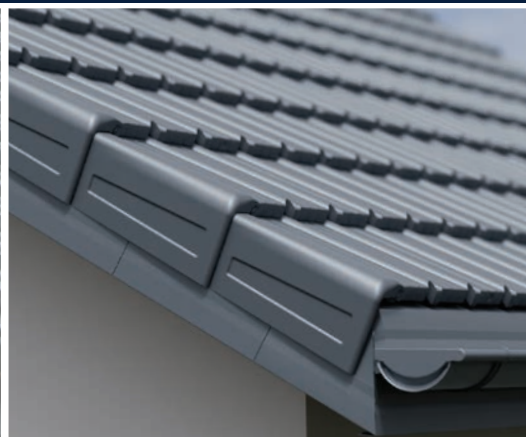
DEDICATED ACCESSORIES



SEE MORE



Ridge cap GSM-FLAT
Stop end ZS-FLAT
Stop end ZP-FLAT



Dry verge Murano
Drift - Universal bottom modular barge flashing

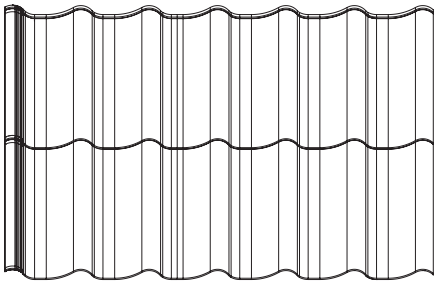
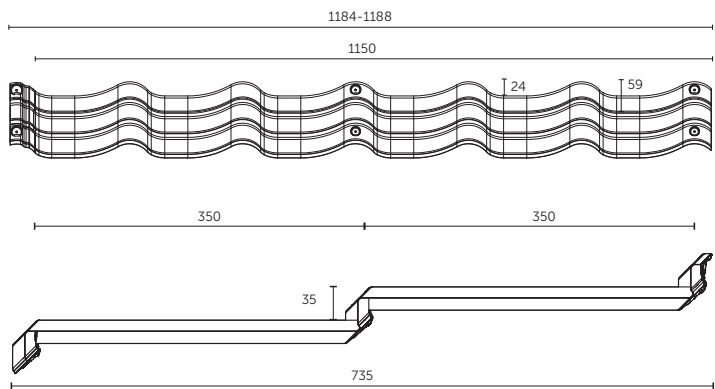


Ridge cap GSM-TOP
Stop end ZP-TOP



Bella Sara

ETERNALLY
BEAUTIFUL.



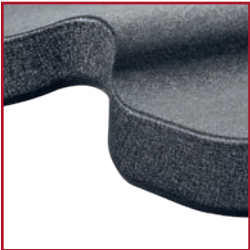
Total width of the sheet:	1184-1188 mm
Effective width of the sheet:	1150 mm
Width between wave peaks:	191 mm
Total length of the sheet:	735 mm
Effective length of the sheet:	700 mm
Module length:	350 mm
Total height:	59 mm
Height of the embossment:	35 mm
Wave height:	24 mm
Covering area of the sheet:	0,805 m ²
Sheet thickness:	0,5 mm
Zinc coat:	min. 275 g/m ²
Sheet weight:	max 3,7 kg
Pallet size:	1200 x 800 x 990 mm
Sheets per pallet:	350 pcs.
Layers/sheets per pallet:	10/35 pcs.
Effective m ² per pallet:	281,75 m ²
Pallet weight:	~1320 kg
Minimum roof pitch:	9°



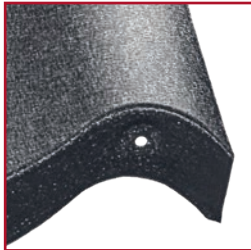
**STRENGTHENED
VERTICAL FOLDS**



**TUCKED-DOWN
BOTTOM EDGE**



**PRE-DRILLED
MOUNTING
HOLES**

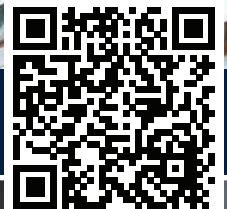


Product have received EUIPO registration certificate

Available coatings: X-Matt GreenCoat Crown BT, D-Matt,
IDEAL-SATIN GreenCoat Pural BT, IDEAL-MATT GreenCoat Pural BT matt



DEDICATED ACCESSORIES



SEE MORE



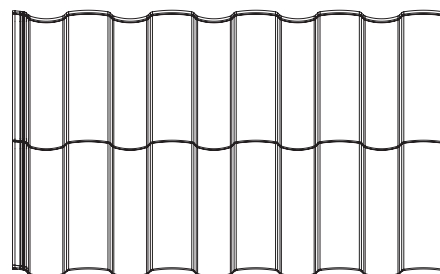
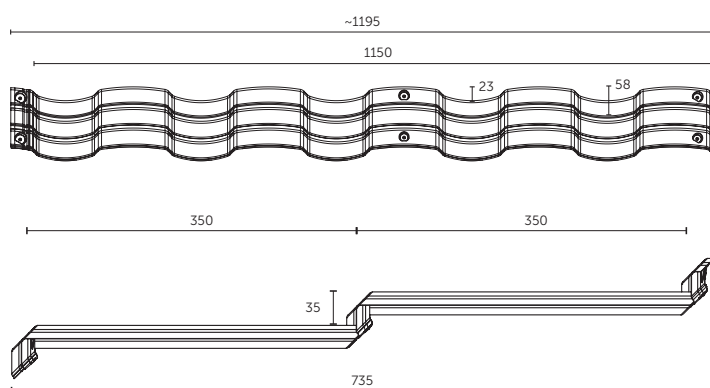
Drift - Universal outer modular barge flashing
Drift - Universal bottom modular barge flashing



Ridge cap GS-LUX



TECHNOLOGY FOR STYLE.



Total width of the sheet:	1195 mm
Effective width of the sheet:	1150 mm
Width between wave peaks:	230 mm
Total length of the sheet:	735 mm
Effective length of the sheet:	700 mm
Module length:	350 mm
Total height:	58 mm
Height of the embossment:	35 mm
Wave height:	23 mm
Covering area of the sheet:	0,805 m ²
Sheet thickness:	0,5 mm
Zinc coat:	min. 275 g/m ²
Sheet weight:	max 3,7 kg
Pallet size:	1210 x 800 x 1040 mm
Sheets per pallet:	352 pcs.
Layers/sheets per pallet:	11/32 pcs.
Effective m ² per pallet:	283,36 m ²
Pallet weight:	~1330 kg
Minimum roof pitch:	9°



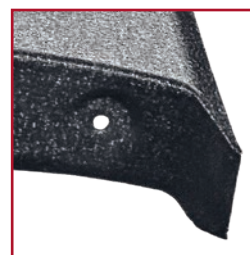
**STRENGTHENED
VERTICAL FOLDS**



**TUCKED-DOWN
BOTTOM EDGE**



**PRE-DRILLED
MOUNTING
HOLES**

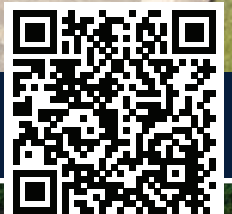


Product have received EUIPO registration certificate

Available coatings: X-Matt GreenCoat Crown BT, D-Matt, IDEAL-SATIN GreenCoat Pural BT, IDEAL-MATT GreenCoat Pural BT matt



DEDICATED ACCESSORIES



SEE MORE



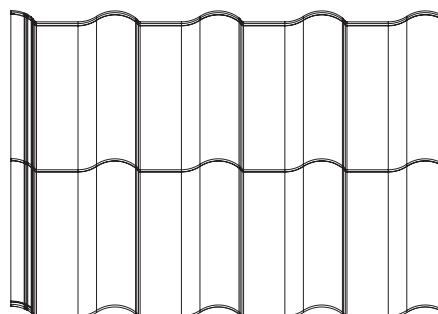
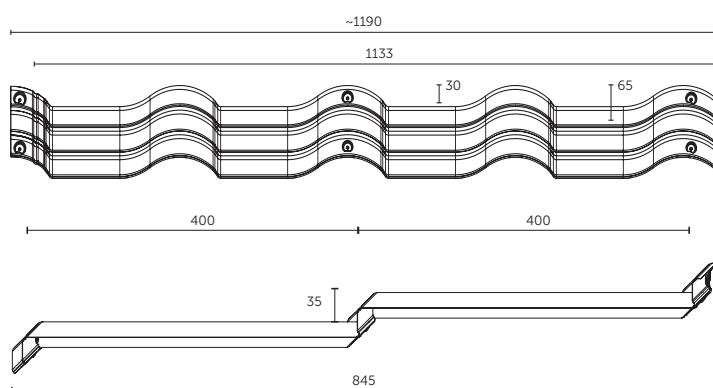
Stop end ZS-LUX



Ridge cap GS-LUX



NEW FACE OF THE ROOF.



Total width of the sheet:	1190 mm
Effective width of the sheet:	1133 mm
Width between wave peaks:	283 mm
Total length of the sheet:	845 mm
Effective length of the sheet:	800 mm
Module length:	400 mm
Total height:	65 mm
Height of the embossment:	35 mm
Wave height:	30 mm
Covering area of the sheet:	0,91 m ²
Sheet thickness:	0,5 mm
Zinc coat:	min. 275 g/m ²
Sheet weight:	max 4,3 kg
Pallet size:	1210 x 1000 x 760 mm
Sheets per pallet:	350 pcs.
Layers/sheets per pallet:	5/70 pcs.
Effective m ² per pallet:	318,5 m ²
Pallet weight:	~1500 kg
Minimum roof pitch:	9°



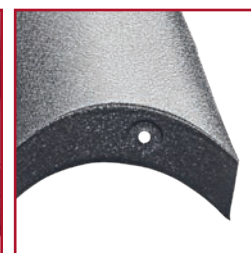
**STRENGTHENED
VERTICAL FOLDS**



**TUCKED-DOWN
BOTTOM EDGE**



**PRE-DRILLED
MOUNTING
HOLES**



Product have received EUIPO registration certificate

Available coatings: X-Matt GreenCoat Crown BT, D-Matt,
IDEAL-SATIN GreenCoat Pural BT, IDEAL-MATT GreenCoat Pural BT matt



DEDICATED ACCESSORIES



SEE MORE



Drift - Universal outer modular barge flashing
Drift - Universal bottom modular barge flashing



Ridge cap GS-LUX



DEDICATED ACCESSORIES





WELL EQUIPPED ROOFS.

Complete and aesthetic – that's what our roofs are all about. Perfectly matched and dedicated accessories, together with the modular roofing sheets, lend an extraordinary appearance to the roof surface.

Barge flashings, ridge caps, together with starter and vent strips, or our Modular Roof Flashing System (MOD) make up a complete solution that guarantees the durability and security of the roof covering. With genuine and dedicated flashing components, a unique design is achieved that helps to maintain or even enhance the major tightness and durability parameters of the roofing material.



Dry verge
Venecja

Width:	372 mm
Height:	189 mm
Depth:	82 mm
Thickness od sheet:	0,7 mm
Quantity per package:	12 pcs.
Colors:	10

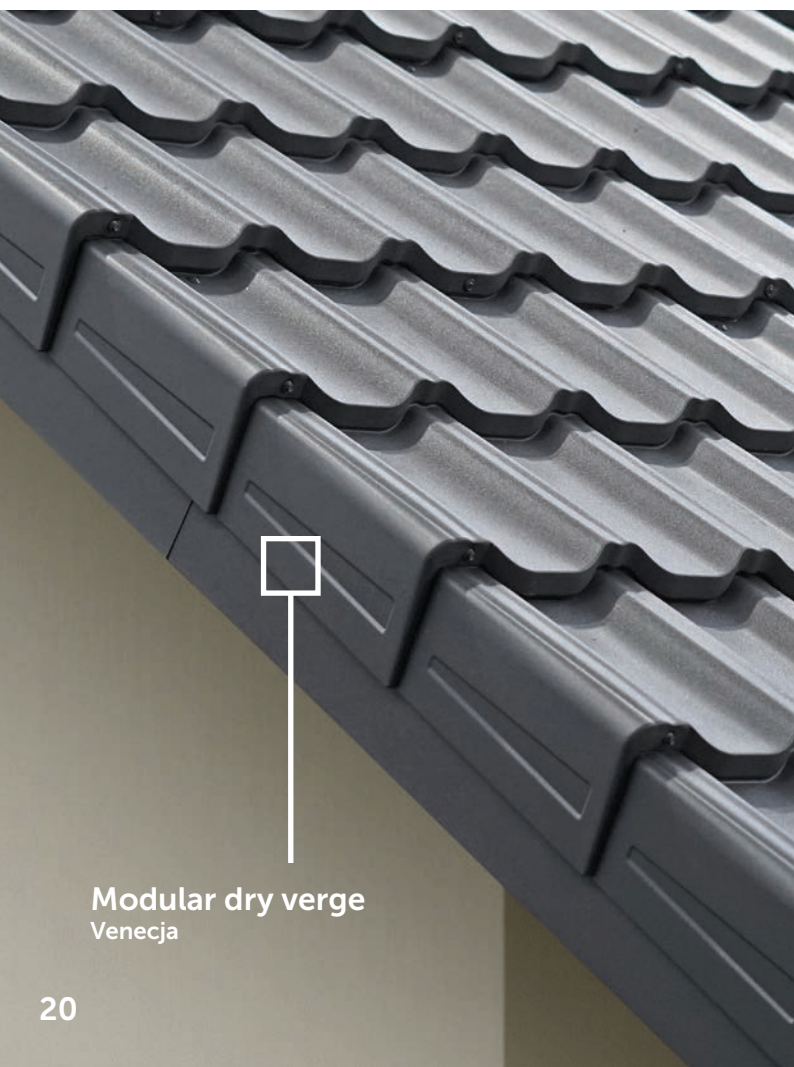
New
in offer



Dry verge
Murano

Width:	364 mm
Height:	193,3 mm
Depth:	147,8 mm
Thickness od sheet:	0,7 mm
Quantity per package:	6 pcs.
Colors:	10

Material: Steel sheet S280 galvanized Z275 with organic coatings X-MATT SP30, D-MATT SP35



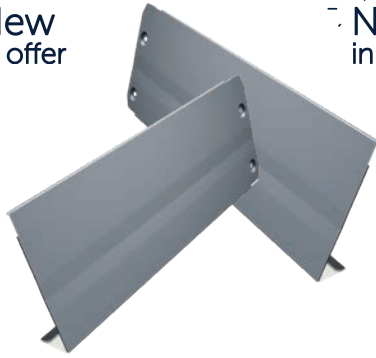
Modular dry verge
Venecja



New
in offer

Modular dry verge
Murano

New
in offer



Drift 150
Universal bottom modular
barge flashing

Total width:	384 mm
Effective width:	350 mm
Height:	150 mm
Depth:	40 mm
Thickness of sheet:	0,5 mm
Quantity per package:	20 pcs.
Colors:	8
Left, Right	

New
in offer



Drift 180
Universal bottom modular
barge flashing

Total width:	384 mm
Effective width:	350 mm
Height:	180 mm
Depth:	40 mm
Thickness of sheet:	0,5 mm
Quantity per package:	20 pcs.
Colors:	8
Left, Right	

New
in offer



Drift 224
Universal outer modular
barge flashing

Total width:	381 mm
Effective width:	350 mm
Height:	224 mm
Depth:	32 mm
Thickness of sheet:	0,5 mm
Quantity per package:	20 pcs.
Colors:	8
Left, Right	

Material: Steel sheet S280 galvanized Z275 with organic coatings X-MATT SP30, D-MATT SP35



Drift

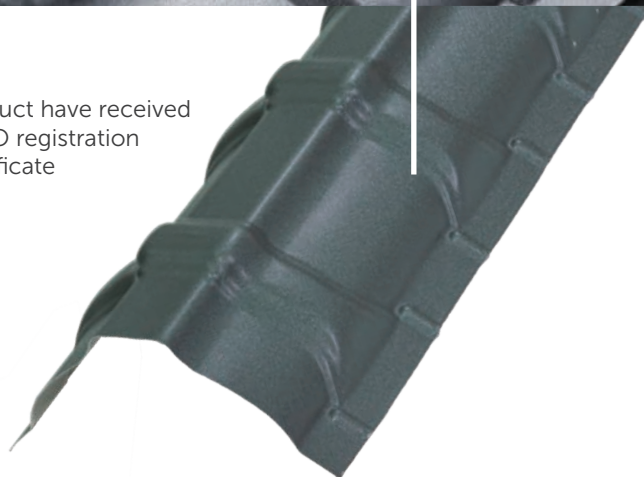
Drift 224
Universal outer modular
barge flashing

New
in offer

Drift 150
Drift 180
Universal bottom modular
barge flashing



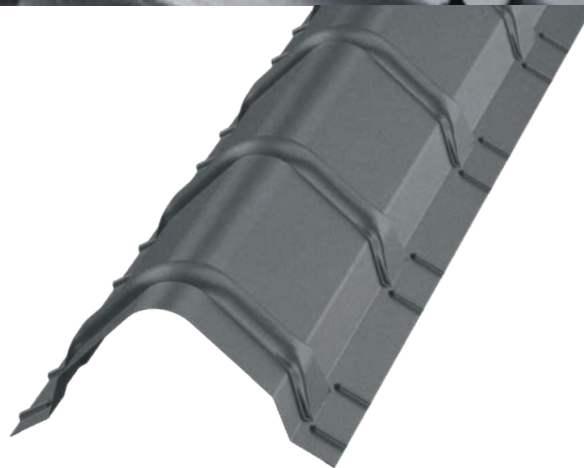
Product have received
WIPO registration
certificate



Ridge cap GS-LUX

Venecja, Bella Sara, Rialto, Ferrara

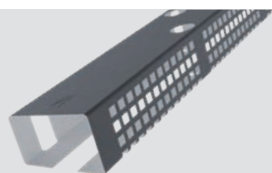
Total width:	1205 mm
Effective width:	1145 mm



Ridge cap GSC-TOP

Como

Total width:	1030 mm
Effective width:	940 mm



Eaves vent profile

Venecja, Murano, Bella Sara,
Rialto, Ferrara

Length:	1200 mm
Thickness:	0,5 mm
Height:	27/31 mm
Ventilation area:	132 cm ²
Quantity per package:	42 pcs.

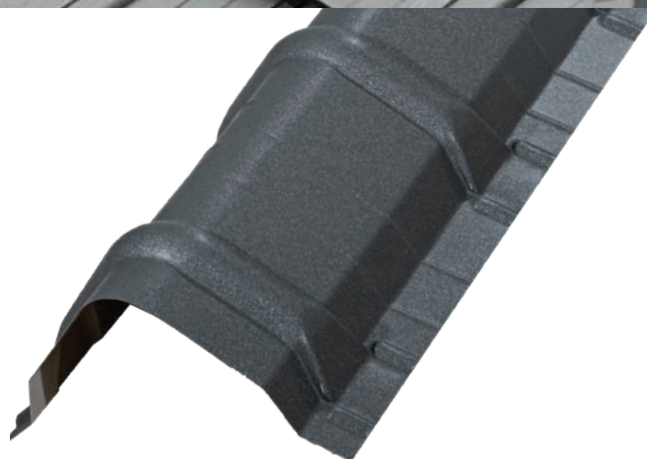
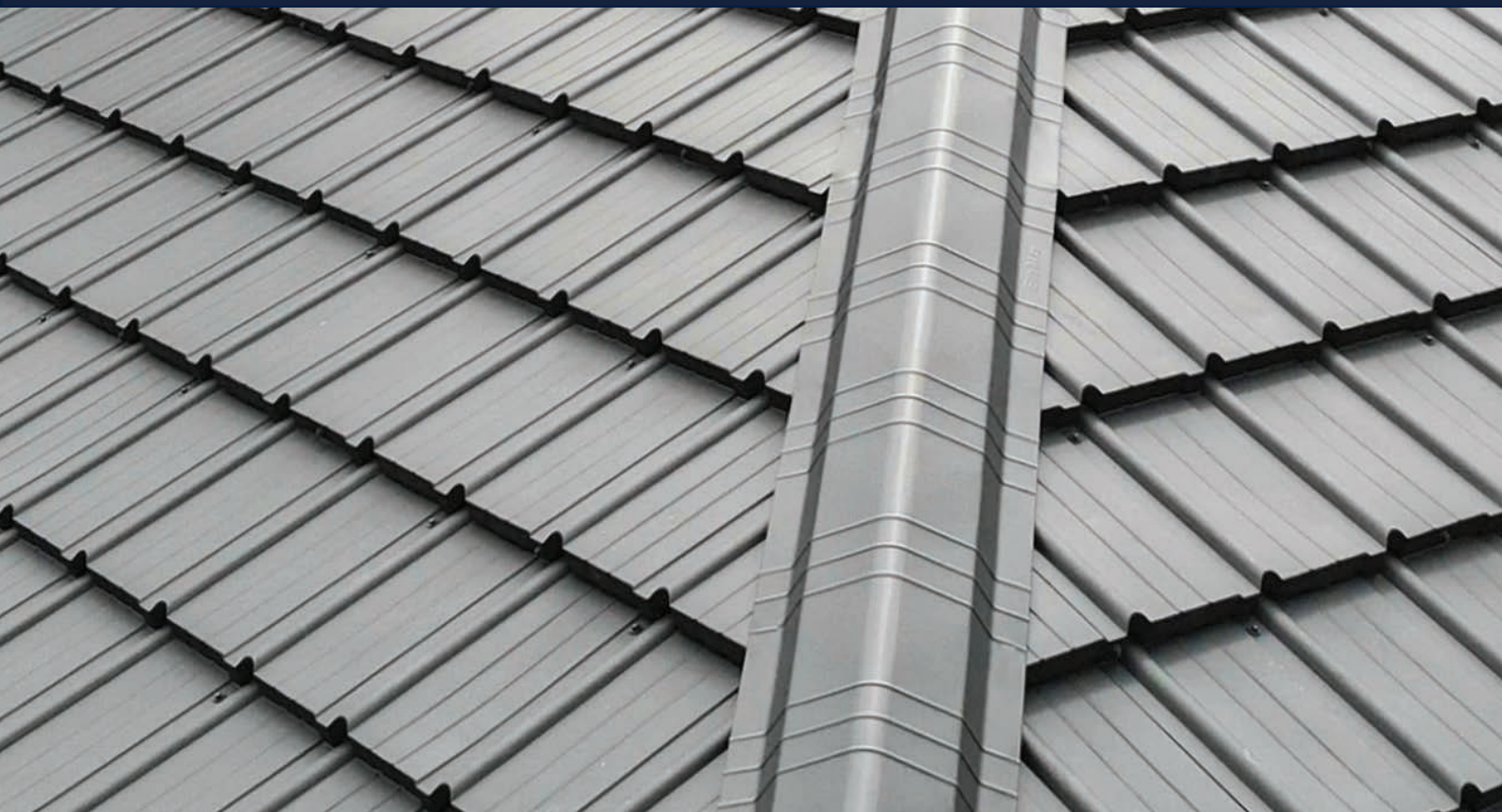


Eaves vent profile

Como

Length:	1200 mm
Thickness:	0,5 mm
Height:	21/24 mm
Ventilation area:	132 cm ²
Quantity per package:	60 pcs.

Material: sheet steel S280 galvanized Z275, with organic coating SP35



Ridge cap GSM-TOP
Murano

Total width:	1200 mm
Effective width:	1140 mm

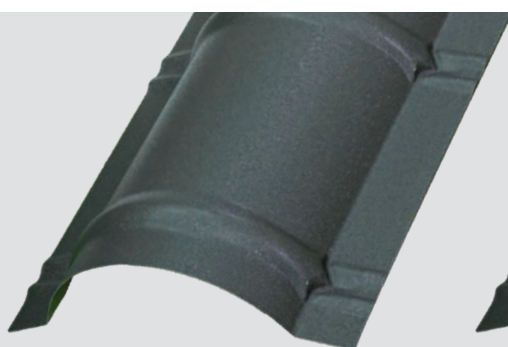


Ridge cap GSM-FLAT
Murano

Total width:	1200 mm
Effective width:	1150 mm

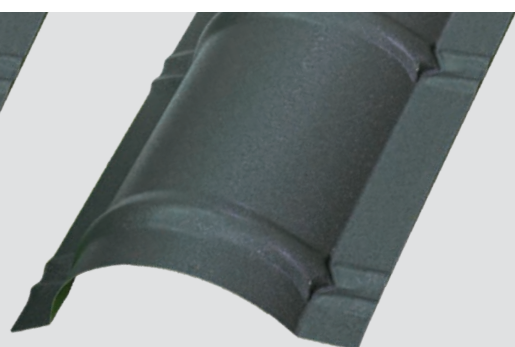


Designation
original Budmat
products



Ridge cap GSV-30
Venecja

Total width:	1250 mm
Effective width:	1150 mm



Ridge cap GSM-30
Murano

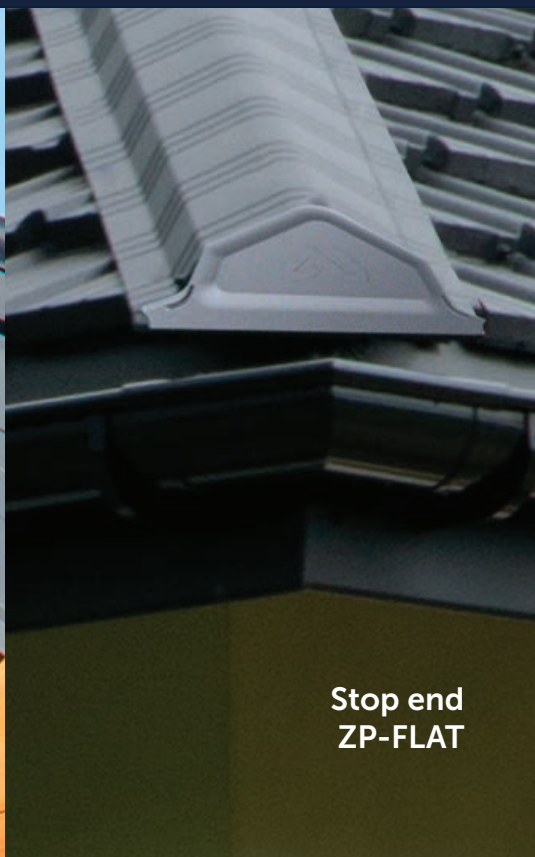
Total width:	1250 mm
Effective width:	1140 mm



DEDICATED ACCESSORIES



**Stop end
ZP-LUX**



**Stop end
ZP-FLAT**



**Stop end
ZP-TOP**



**Stop end
ZP-LUX**
for ridge cap GS-LUX

Width:	297 mm
Height:	264 mm
Depth:	65 mm
Thickness od sheet:	0,7 mm
Quantity per package:	8 pcs.
	(zgrzewane 2pcs.)
Colors:	10



**Stop end
ZP-FLAT**
for ridge cap GSM-FLAT

Width:	272 mm
Height:	125 mm
Depth:	35 mm
Thickness od sheet:	0,5 mm
Quantity per package:	10 pcs.
Colors:	16



**Stop end
ZP-TOP**
for ridge cap GSM-TOP and GSC-TOP

Width:	248 mm
Height:	142 mm
Depth:	35 mm
Thickness od sheet:	0,5 mm
Quantity per package:	10 pcs.
Colors:	16

Material: sheet steel S280 galvanized Z275, with organic coating SP35



Stop end
ZS-FLAT



Stop end
ZS-LUX



Stop end ZS-FLAT
for ridge cap GSM-FLAT

Width:	300 mm
Height:	102 mm
Depth:	232 mm
Thickness od sheet:	0,7 mm
Quantity per package:	12 pcs.
Colors:	10



Stop end ZS-LUX
for ridge cap GS-LUX

Width:	308 mm
Height:	107 mm
Depth:	274 mm
Thickness od sheet:	0,7 mm
Quantity per package:	12 pcs.
Colors:	10

Material: sheet steel S280 galvanized Z275, with organic coating SP35



MOD SYSTEM

SYSTEM OF MODULAR FLASHINGS

MOD

**ONE
MANUFACTURER
ONE
SYSTEM**

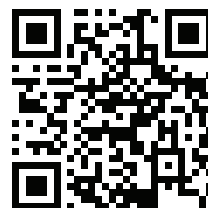
**NEW FINISH
QUALITY
FOR EACH
ROOF**

Roofs are our passion, which is why we reach out bravely for new technologies to provide customers with innovative solutions so they can enjoy the perfect roof. We were the first on the market to add to our range a universal, complete MOD Modular Roof Flashing System, to make roof flashing installation simpler and faster, with a durable and aesthetically pleasing effect.

Our experts used specially designed modern machinery to create a universal set of flashings for use on different types of roofs. The entire system, with all its components, is made of steel produced by renowned steelworks – Swedish SSAB and German ArcelorMittal.

Advantages and benefits of the innovative MOD system:

- quick and easy installation by one person
- invisible screws
- perfectly matched components
- elimination of installation errors
- convenient/problem-free transportation
- guaranteed superior quality of the entire system
- highest aesthetics without scratches, indentations, metal filings or non-matching items

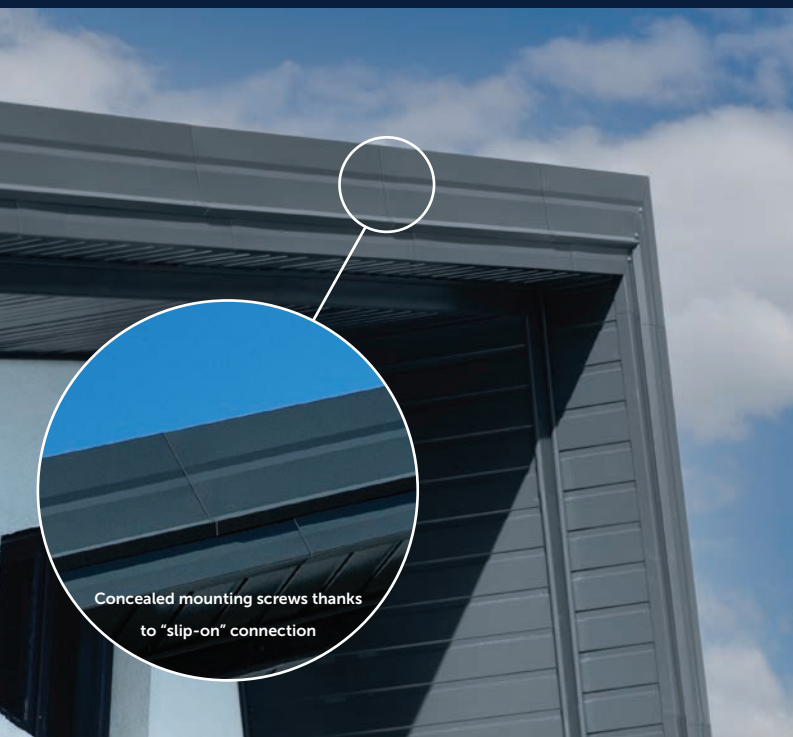
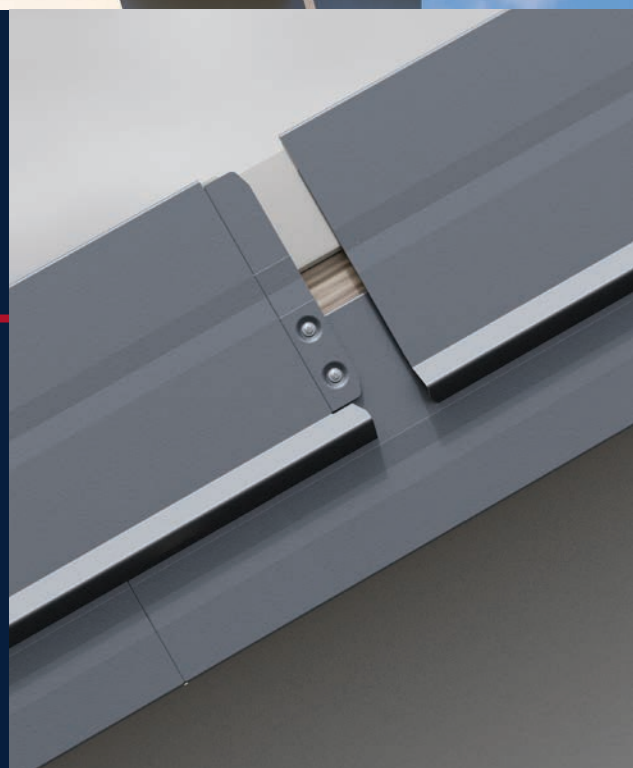


SEE MORE



- **PRECISION OF WORKMANSHIP**
- **QUICK AND EASY INSTALLATION**
- **EXCEPTIONAL LOOK**

- Innovative "slip-on" connection system
- Simple, one-person installation made possible by pre-drilled mounting holes and flashing dimensions of 1200 mm in length
- Additional adjustability during installation is possible, even after provisional screwing of the flashings, thanks to oblong mounting holes
- Bendings make the flashings stiff and prevent their corrugation

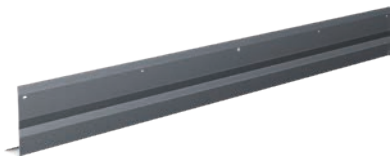


Concealed mounting screws thanks
to "slip-on" connection

Today's construction industry demands and expects comprehensive high-quality solutions, which are quick and easy to install. The MOD system is one such solution – an innovative, universal product suitable for all types of roofing. Ready-made, perfectly matching accessories for a superior aesthetic finish for every roof. A durable, beautifully finished roof on your house with the MOD Modular Roof Flashing System.

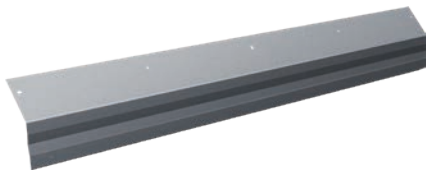
The MOD system has received the Technical
Recommendation of the Building Research
Institute in Warsaw. RT ITB-1292/2020





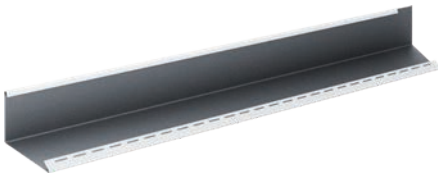
Verge trim
PP 150, PP 180, PP 220

Length: 1200 mm
Height: 150, 180, 220 mm
Thickness: 0,5 mm
Quantity per package: 26, 28, 24 pcs.
Colors: 41



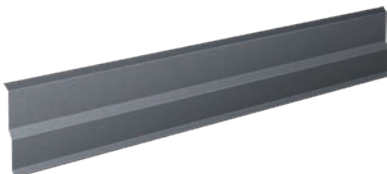
Eaves flashing
PN 80, PN 120

Length: 1200 mm
Height: 80, 120 mm
Thickness: 0,5 mm
Quantity per package: 20, 20 pcs.
Colors: 41



Inner barge flashing
WW 83 L/P

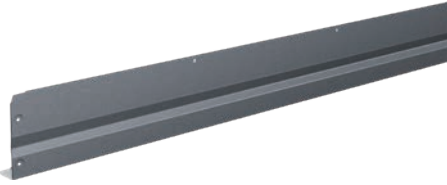
Length: 1200 mm
Height: 83 mm
Thickness: 0,5 mm
Quantity per package: 14 pcs.
Colors: 41



Wall flashing
OP 190 L/P

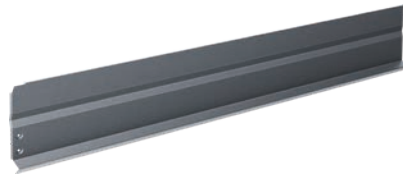
Length: 1200 mm
Height: 190 mm
Thickness: 0,5 mm
Quantity per package: 30 pcs.
Colors: 41





Lower barge flashing
WD 150 L/P, WD 180 L/P

Length: 1200 mm
Height: 150, 180 mm
Thickness: 0,5 mm
Quantity per package: 20, 20 pcs.
Colors: 41



Outer barge flashing
WZ 224 L/P

Length: 1200 mm
Height: 224 mm
Thickness: 0,5 mm
Quantity per package: 20 pcs.
Colors: 41



Valley gutter
RKS 125

Length: 1200 mm
Thickness: 0,5 mm
Quantity per package: 10 pcs.
Colors: 41



Clip

Quantity per package: 300 pcs.
(20 clip strips - 15 pcs each)
Colors: 41



A photograph of a modern, single-story house with a grey tiled roof. The house has white walls, a dark brown front door, and several windows. The roof is covered in grey tiles with a wavy pattern. There are two chimneys on the roof. The house is set against a blue sky with white clouds. The text 'COST-EFFECTIVE SOLUTIONS IN AN ELEGANT FORM.' is overlaid on the left side of the image.

COST-EFFECTIVE SOLUTIONS IN AN ELEGANT FORM.

The roof sheets are lighter than traditional roofings. They put less strain on the roof structure, which lowers the overall cost of construction. The easiest and least expensive way to install them comes with simple roofs. Sara? Aria? Maybe Zefir? Each of them guarantees the best quality. Choose a roof in your favourite colour - their selection is truly abundant!



Total width: **1180 mm**
 Effective width: **1100 mm**
 Width between wave peaks: **183 mm**
 Sheet length: **1155-6505 mm**
 Module length: **350 or 400 mm**
 Total height: **43 mm**
 Height of the embossment: **20 mm**
 Thickness of sheet: **0,5 mm**
 Zinc coat: **min. 275 g/m²**

Total width: **1140 mm**
 Effective width: **1040 mm**
 Width between wave peaks: **208 mm**
 Sheet length: **1155-6505 mm**
 Module length: **350 or 400 mm**
 Total height: **54 mm**
 Height of the embossment: **20 mm**
 Thickness of sheet: **0,5 mm**
 Zinc coat: **min. 275 g/m²**

Total width: **1180 mm**
 Effective width: **1100 mm**
 Width between wave peaks: **183 mm**
 Sheet length: **1155-6505 mm**
 Module length: **350 or 400 mm**
 Total height: **37 mm**
 Height of the embossment: **14 mm**
 Thickness of sheet: **0,5 mm**
 Zinc coat: **min. 275 g/m²**

Available in coatings: Polyester Gloss, Ultramat, X-Matt GreenCoat Crown BT, on individual order in coatings: IDEAL-SATIN GreenCoat Pural BT, IDEAL-MATT GreenCoat Pural BT matt