

TIMELESS ELEGANCE.

A distinguishable trait of roof panels is their classic and simple form. They suit both modern and historic roofs, are lightweight and require a lighter roof construction, which optimizes implementation costs. The roof panels, thanks to their characteristic edges and special embossing, also reinforce the roof itself. This makes the roofing beautiful and exceptionally durable.

IRON *Click*

Roof panel Iron Click



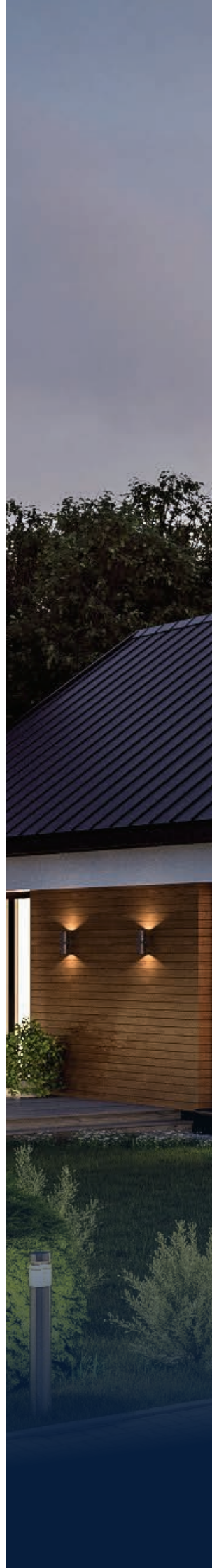
PRIME *Click L*

Roof panel Prime Click L



DUO *Snap*

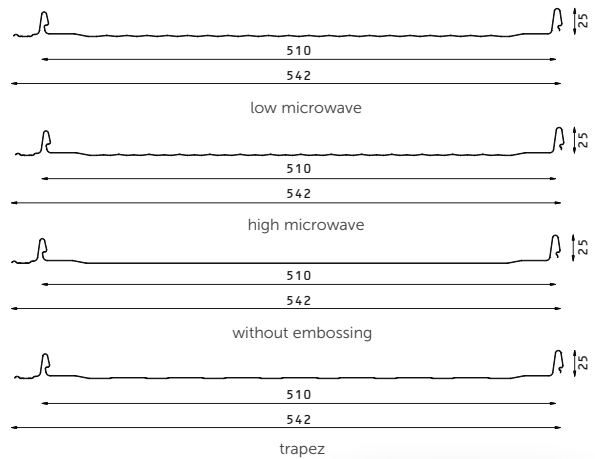
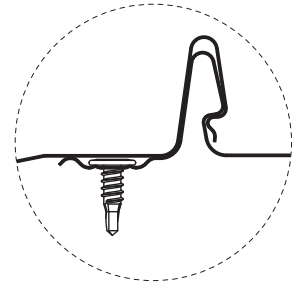
Roof panel Duo Snap





IRON Click

FREEDOM OF CHOICE.



Total width:	542 mm
Effective width:	510 mm
Sheet length:	1000-8000 mm
Total height:	25 mm
Thickness of sheet:	0,5-0,7 mm
Zinc coat:	min. 275 g/m ²
Minimal roof pitch:	8° (14%)

Standard:

- 25 mm straight panel hem on the eaves side and 25 mm straight panel hem on the ridge side.

Panel folding options (stiffens and forms a straight eave line):

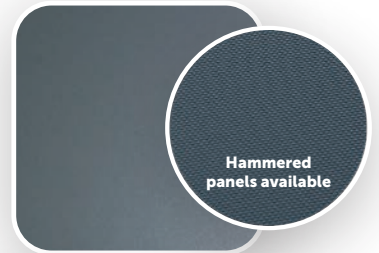
- 25 mm panel extension fold-up from the eaves side and 25 mm straight panel extension on the ridge side.
- no panel extension on the eaves side and no panel extension on the ridge side

The standard and low microwave versions can be made of **hammered metal sheets***. The dispersion of light reflections on **hammered panels** makes the roof look even more impressive. You may choose the design, covering and colours as per your **individual taste**.

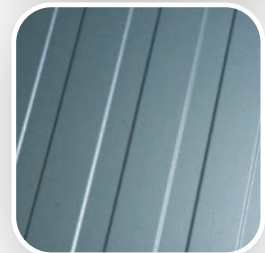
**Available only for 0,5 mm metal sheets.*

Available coatings - Polyester Gloss, Ultramat, X-Matt GreenCoat Crown BT and on individual order in the following coatings: IDEAL-SATIN GreenCoat Pural BT, IDEAL-MATT GreenCoat Pural BT matt

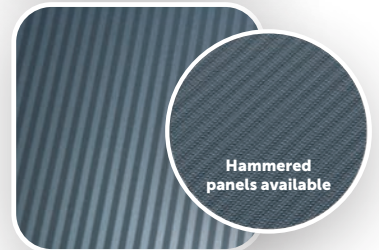
IRON Click



IRON Click
TRAPEZ



IRON Click
LOW MICROWAVE



IRON Click
HIGH MICROWAVE





INNOVATION



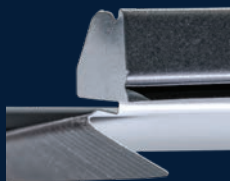
with fold-up



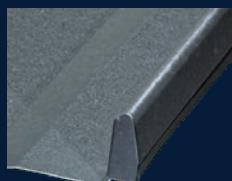
without fold-up
standard



with hem



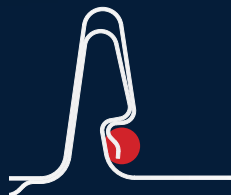
Lock cover (open)



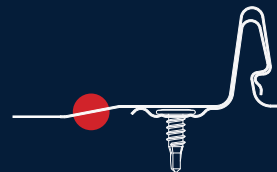
Lock cover (closed)



Mounting cups



Profiled lock covering
edge



Raised panel surface

REALIZATIONS

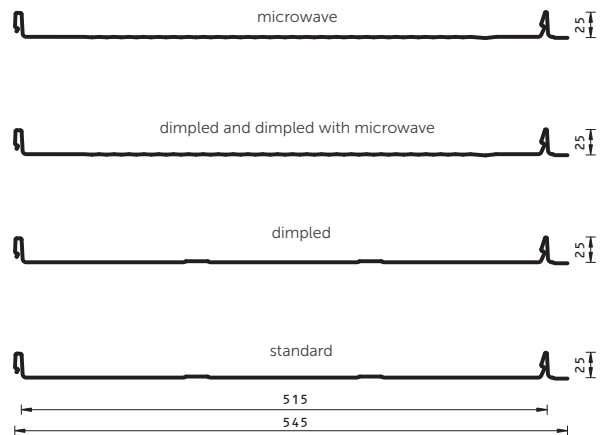
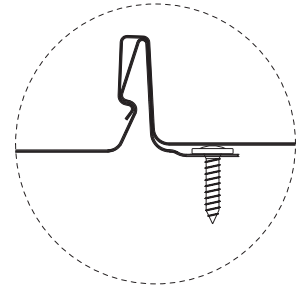


SEE MORE



PRIME *ClickL*

CLASSIC QUALITY.



Total width:	545 mm
Effective width:	515 mm
Sheet length:	800-8000 mm
Total height:	25 mm
Zinc coat:	min. 275 g/m ²
Minimal roof pitch:	8° (14%)
Thickness of sheet:	0,5-0,7* mm

*0.7 mm metal sheets available only in the microwave version
with the Polyester Gloss coating

Type of reinforcement (longitudinal embossing of the panel):

- trapezoidal shape - defaultly
- no reinforcing embossings - on Client's request

Standard:

- type of reinforcement: longitudinal trapezoidal embossing of the panel (does not apply to microwaved and dimpled panels)
- 25 mm straight panel extension on the eaves side and 25 mm straight panel extension on the ridge side

Panel folding options (stiffens the panel and creates a straight eaves line):

- 25 mm panel extension fold-up from the eaves side and 25 mm straight panel extension on the ridge side.
- 50 mm panel extension fold-up from the eaves side and no panel extension on the ridge side (up to 2.5 mm)
- 50 mm straight panel extension on the eaves side and no panel extension on the ridge side (up to 2.5 mm)

Prime Click S and Prime Click L are available in coatings: Polyester Gloss, Ultramat, X-Matt GreenCoat Crown BT, IDEAL-SATIN GreenCoat Pural BT, IDEAL-MATT GreenCoat Pural BT matt

PRIME *ClickL*



PRIME *ClickL*

DIMPLED



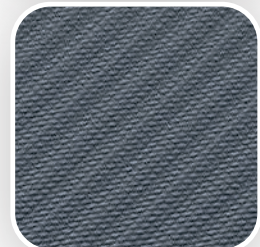
PRIME *ClickL*

MICROWAVE



PRIME *ClickL*

DIMPLED WITH MICROWAVE





without fold-up
standard



with fold-up

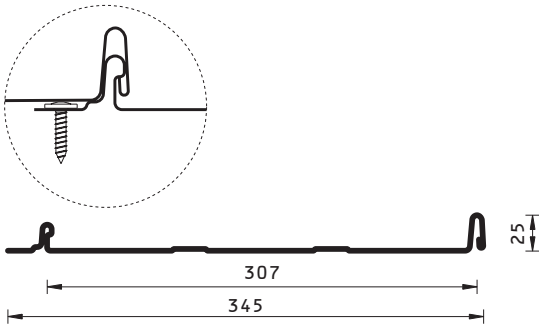
REALIZATIONS



SEE MORE



PRIME Click S



Total width:	345 mm
Effective width:	307 mm
Sheet length:	800-8000 mm
Total height:	25 mm
Zinc coat:	min. 275 g/m ²
Minimal roof pitch:	8° (14%)
Thickness of sheet:	0,5-0,7 mm

Type of reinforcement (longitudinal embossing of the panel):

- trapezoidal shape - defaultly
- no reinforcing embossings - on Client's request

Standard:

- type of reinforcement: longitudinal trapezoidal embossing of the panel
- 30 mm straight panel extension on the eaves side and no panel extension on the ridge side

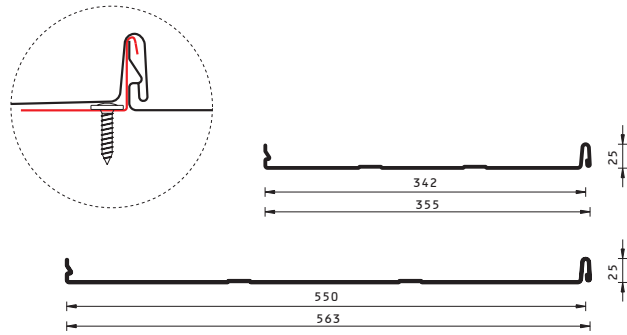
Panel folding options

(stiffens the panel and creates a straight eaves line):

- 30 mm panel extension fold-up from the eaves side and no panel extension on the ridge side
- no panel extension on the eaves side and no panel extension on the ridge side

Prime Click S and Prime Click L are available in coatings: Polyester Gloss, Ultramat, X-Matt GreenCoat Crown BT, IDEAL-SATIN GreenCoat Pural BT, IDEAL-MATT GreenCoat Pural BT matt

DUO Snap



Total width:	355/563 mm
Effective width:	342/550 mm
Sheet length:	800-8000 mm
Total height:	25 mm
Zinc coat:	min. 275 g/m ²
Minimal roof pitch:	8° (14%)
Thickness of sheet:	0,5-0,7 mm

Traditional assembly using standing seam clips combined with the modern CLICK-Snap-In system.

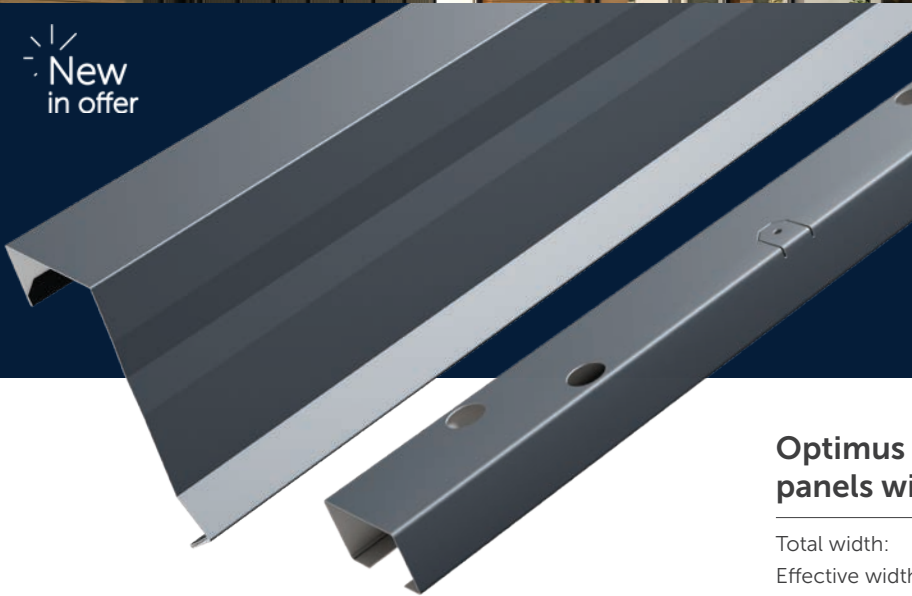
Using the fixed and movable standing seam clips enables the movement of the material on the roof depending on weather conditions.

Available coatings: Polyester Gloss, Ultramat, X-Matt GreenCoat Crown BT, IDEAL-SATIN GreenCoat Pural BT, IDEAL-MATT GreenCoat Pural BT matt



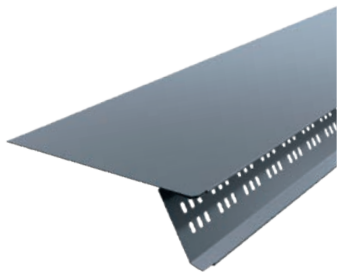

Optimus

New
in offer



Optimus barge flashing for roof panels with an installation strip

Total width:	1200 mm
Effective width:	1170 mm
Height:	132 mm
Width:	66 mm
Quantity per package:	6 sets
Colors:	32
Eaves height:	30 mm
Eaves width:	50mm
	Left, Right



LS-14 starter strip

Length:	1200 mm
Width:	176 mm
Height:	70 mm
Ventilation area:	85,17 cm ²



GTR ridge cap

Total width:	2015 mm
Effective width:	1915 mm



Eaves vent profile for ridge cap GTR LWG-29

Length:	990 mm
Quantity per package:	42 pcs.