

PRODUCT DATA SHEET

AIRSTOP GD2 Conduit Sleeve

To enable vapour retarders and other materials to fulfil their purpose as airtight layer in a construction these must have air-tight joints at openings for conduits. Warm air finds its way inside a building component through even the smallest of holes in the vapour retarder, where it then condenses. AIRSTOP Conduit Sleeves, bonded air-tight with age-resistant sealing plasters, guarantee that the construction is wind-tight and air-tight

FIELD OF APPLICATION

- openings for conduits

ADVANTAGES

- extremely flexible
- resistant to ageing
- integrated sealing plaster for air-tight adhesion
- rubber heat-resistant up to 160°C (short-term)

AVAILABLE IN THE FOLLOWING DIMENSIONS

Type	GD2	GD2	GD2
Width	150 mm	150 mm	228 mm
Length	150 mm	150 mm	228 mm
for cable entry	15 - 20 mm	25 - 35 mm	40 - 55 mm
Carton	30 Stk	30 Stk	8 Stk

PRODUCT DATA

Material composition	EPDM rubber, sealing plaster with age-resistant pure acrylate adhesive
Colour	Black, sealing plaster white with green AIRSTOP imprint
Temperature resistance	-40 °C - 100 °C
Working temperature	-5 °C - 40 °C
Age resistance of adhesive	30 years
Storage	cool and dry

AIRSTOP GD2 Conduit Sleeve

INFO

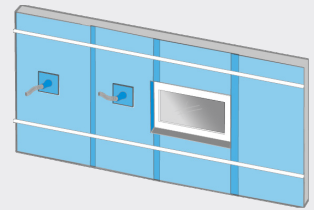
Pull the rubber sleeve over the conduit and attach to the air-tight layer (vapour barrier, OSB, . . .) by the integrated sealing plaster. The diameter of the sleeve selected must have the appropriate dimension for the conduit entry point!

Talcum powder or a lubricant can be used if necessary to ease the feeding of the cable/pipe through the sleeve.

The materials used must be free from dust and grease and substrates must be dry and supporting.

The greater the pressure applied, the better the performance of the adhesive tape.

On highly porous and very absorbent substrates such as concrete, plaster, untreated steel or raw wood, we recommend pre-treatment of the substrate with our ISOCELL Primers.



ISOCELL GmbH & Co KG

Gewerbstraße 9
5202 NEUMARKT AM WALLERSEE | Österreich
Tel.: +43 6216 4108
office@isocell.at

ISOCELL SCHWEIZ AG

Herbergstrasse 29
9524 ZUZWIL | Suisse /Schweiz
Tel.: +41 71 940 06 72
office@isocell.ch

ISOCELL FRANCE

170 Rue Jean Monnet | ZAC de Prat Pip Sud
29490 GUIPAVAS | France
Tél.: +33 2 98 42 11 00
contact@isocell-france.fr

ISOCELL BUREEL BELGIË

Außenborner Weg 1 | Schoppen
4770 AMEL | Belgique
Tel.: +32 80 39 90 58
office@isocell.be

ISOCELL Sverige AB

Torshamnsgatan 35
164 40 KISTA | Sverige
Tel.: +46 10 130 25 00
info@isocell.se

ISOCELL
www.isocell.com