



ISO WINDOW FEBA SOFT ES

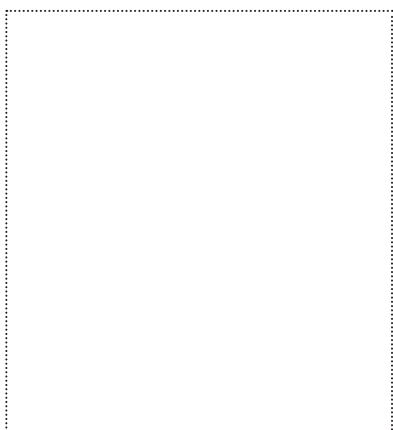
The one-sided window tape consists of a fleece structure that can be plastered over and is coated with a high-performance adhesive. The back is completely adhesive and has split liners. The tape is suitable for bonding to the window assembly.

APPLICATION

- for window installation inside

ADVANTAGES

- „reversed-system“
- „fingerlift“
- soft flexible structure
- extremely strong adhesion on all types of window
- frame and various substrates e.g. concrete, plaster, OSB, wood, vapour barriers...
- split liners
- flexibility for movement of building component
- can be plastered and painted over



AVAILABLE IN THE FOLLOWING DIMENSIONS

Width of roll	75 mm	100 mm
Length of roll	25 m	25 m
Liner split	15 / 60	15 / 85
Carton content/rolls	6	4

PRODUCT DATA

Material	flexible fleece, laminated air-tight
Working temperature	- 5 °C - + 40 °C
Temperature resistance	- 40 °C - + 80 °C (temporarily + 100°C)
UV stability	6 months
Storage	12 months; cool and dry
Colour	white with blue ISO WINDOW print
sd-value	7 m

GUIDELINES FOR USE

ISOWINDOW FEBA SOFT ES

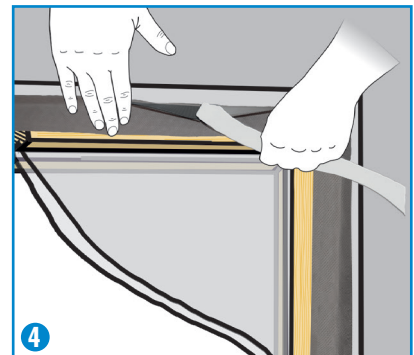
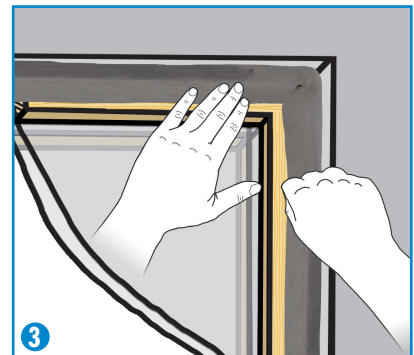
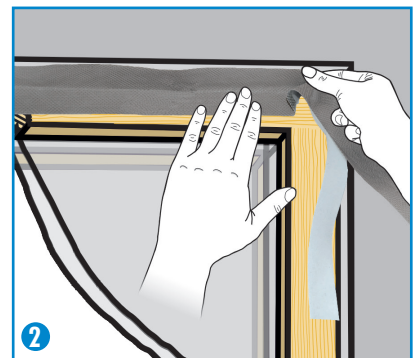
ISOWINDOW FEBA SOFT ES is attached to the window frame after installation. The black fleece side of the tape can be plastered over and painted over and must face outwards. The wide adhesive surface of the tape is attached to the wall, wood, OSB or vapour barrier. Attention must be paid that the substrate is dry and intact (if necessary treat the surfaces with BUBI LF Bonding Primer or UNI Primer).

(1)
Cut the window tape with approx. 12cm extra length. Pull the masking paper off the adhesive strip and press the adhesive tape carefully onto the window frame.

(2)
Make a fold or loop at the corners. To do so, press the window tape firmly to the window frame as far as the corner, then lift slightly, push the material along and turn 90°.

(3)
Now continue to press the window tape onto the window frame. The 'corner' fold seals the corners optimally. Do this at every corner

(4)
When the window tape is attached to the entire window frame and the joint insulated, pull off the wide masking paper and press onto the window frame.
The more pressure applied, the better the adhesion!



ISOCELL GmbH
Gewerbstraße 9
5202 NEUMARKT AM WALLERSEE | Österreich
Tel.: +43 6216 4108 | Fax: +43 6216 7979
office@isocell.at

ISOCELL SCHWEIZ AG
Herbergstrasse 29
9524 ZUZWIL | Suisse /Schweiz
Tel.: +41 71 544 47 20
office@isocell.ch

ISOCELL FRANCE
170 Rue Jean Monnet | ZAC de Prat Pip Sud
29490 GUIPAVAS | France
Tél.: +33 2 98 42 11 00 | Fax: +33 2 98 42 11 99
contact@isocell-france.fr

ISOCELL BUREEL BELGIË
Außenborner Weg 1 | Schoppen
4770 AMEL | Belgique
Tel.: +32 80 39 90 58 | Fax: +32 80 39 97 68
office@isocell.be

ISOCELL Sverige AB
Gamla Stallet | Stora Väsbys
194 37 UPPLANDS VÄSBY | Sverige
Tel.: +46 10 130 25 01
office@isocell.se

ISOCELL
www.isocell.com