



ISO WINDOW FEBA SOFT WS

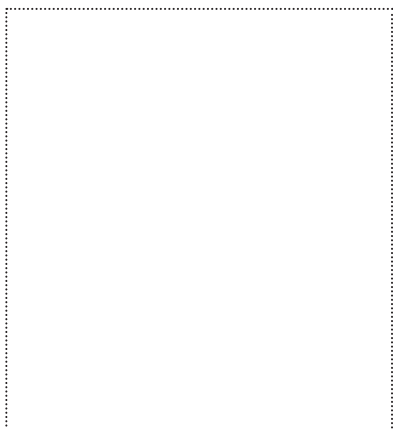
The window tape two-way consists of a fleece structure that can be plastered over and is coated with a high-performance adhesive. The back is completely adhesive and has split liners. The adhesive strip covering the surface can be attached directly to the window frame without detaching a liner and the tape is completely concealed when embedded.

APPLICATION

- for window installation

ADVANTAGES

- „fingerlift“
- soft flexible structure
- extremely strong adhesion on all types of window
- frame and various substrates e.g. concrete, plaster, OSB, wood, vapour barriers . . .
- alternating adhesive coating for concealed fitting
- split liners
- flexibility for movement of building component
- can be plastered and painted over



AVAILABLE IN THE FOLLOWING DIMENSIONS

Width of roll	75 mm	100 mm
Length of roll	25 m	25 m
Liner split	25 / 50	35 / 65
Carton content/rolls	6	4

PRODUCT DATA

Material	flexible fleece, laminated air-tight
Working temperature	- 5 °C - + 40 °C
Temperature resistance	- 40 °C - + 80 °C (temporarily + 100°C)
UV stability	6 months
Storage	12 months; cool and dry
Colour	white with blue ISO WINDOW print
sd-value	7 m

GUIDELINES FOR USE

ISOWINDOW FEBA SOFT WS

ISOWINDOW FEBA SOFT WS is attached to the window frame before the window is installed. The fleece side of the tape can be plastered and painted over. The adhesive side is attached to the wall, wood, OSB or vapour barrier.

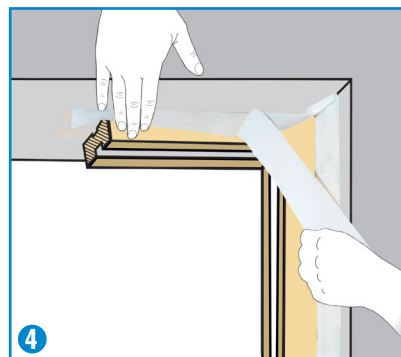
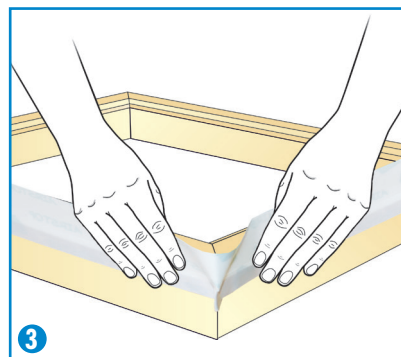
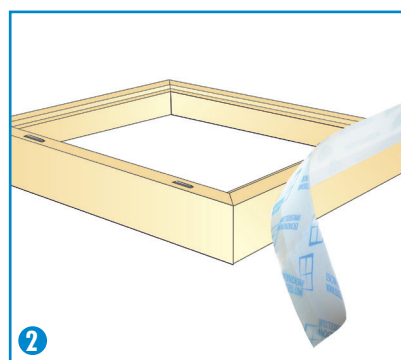
The substrate must be sufficiently dry and intact (if necessary treat areas with BUBI LF bonding primer or UNI Primer before attachment.)

(1)
The upper side of ISOWINDOW FEBA SOFT WS is covered with a narrow acrylic adhesive strip that can be attached directly to the window frame without removing a liner.

(2)
Lay the window frame with the inside facing upwards. Press the mounting strip carefully onto the window frame. Roll the ISOWINDOW FEBA SOFT WS along as far as the corner.

(3)
Make a fold at the corners. Do this by pressing the window tape firmly as far as the corners of the window frame, push the material along and make a fold. These 'corners' are to ensure tightness at the corners.

(4)
When the joint with the wall is insulated, pull off the covering paper and press on the window tape. The more pressure applied, the better the adhesion!



ISOCELL GmbH
Gewerbstraße 9
5202 NEUMARKT AM WALLERSEE | Österreich
Tel.: +43 6216 4108 | Fax: +43 6216 7979
office@isocell.at

ISOCELL SCHWEIZ AG
Herbergstrasse 29
9524 ZUZWIL | Suisse /Schweiz
Tel.: +41 71 544 47 20
office@isocell.ch

ISOCELL FRANCE
170 Rue Jean Monnet | ZAC de Prat Pip Sud
29490 GUIPAVAS | France
Tél.: +33 2 98 42 11 00 | Fax: +33 2 98 42 11 99
contact@isocell-france.fr

ISOCELL BUREEL BELGIË
Außenborner Weg 1 | Schoppen
4770 AMEL | Belgique
Tel.: +32 80 39 90 58 | Fax: +32 80 39 97 68
office@isocell.be

ISOCELL Sverige AB
Gamla Stallet | Stora Väsby
194 37 UPPLANDS VÄSBY | Sverige
Tel.: +46 10 130 25 01
office@isocell.se

ISOCELL
www.isocell.com