



AIRSTOP FLEX FEE tape

To ensure the air and wind tightness of the building envelope, the appropriate foils or panel materials at overlaps, gaps, joints and penetrations must be sealed permanently. AIRSTOP FLEX FEE tape is easily stretchable, tear-resistant, plastered and painted over with a high percentage of adhesive having a high adhesion spectrum. Through the rear split liner, the adhesive tape is particularly suitable for the bonding of corners, transitions and to RAL and Austrian Standard B 5320-compliant window installation.

USAGE

- for Eckverklebung and material transitions
- for sealing the Bauanschlussfuge (window)

ADVANTAGES

- extremely high adhesion to all types of window frames and various substrates such as concrete, plaster, OSB, wood, vapor barriers ...
- split liner
- tear-resistant and resistant
- plastered or painted over

AVAILABLE IN THE FOLLOWING DIMENSIONS

Roll width roll length	60 mm
Carton liner division	25 m 8
rolls	12/48

PRODUCT SPECIFICATIONS

material	easily expandable plastic carrier, airtight laminated acrylate
SD value temperature	5 m
resistance processing	- 40 ° C - + 80 ° C
temperature UV stability	- 5 ° C - + 40 ° C 2 2
	months
Shelf life	years
storage	cool and dry
Colour	Transparent white with green print AIRSTOP

INFO:

+43 6216/4108

WWW.ISOCELL.COM

ISOCELL
VERDÄMMT BESSER

INSTRUCTIONS

AIRSTOP FLEX FEE tape

AIRSTOP FLEX FEE is attached to the window Stock after installation of the window. The non-woven side of the tape is plastered and painted over. The self-adhesive side is adhered to wall, wood, OSB or vapor barrier (if surfaces with BUBI LF adhesive primer pre-treatment). The materials used must dust and grease, in addition, also be the surfaces dry and sustainable.

(1) cutting and adhering

AIRSTOP FLEX FEE tape cut to about 12 cm excess length. Pull the narrow backing paper of the tape and carefully attach to the window frame.

(2) corner design

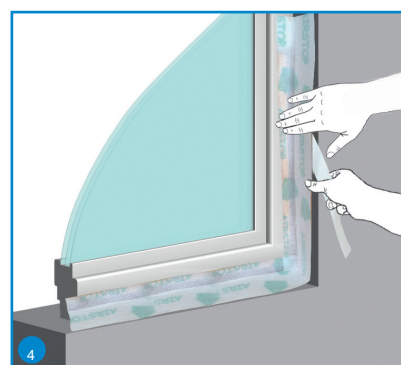
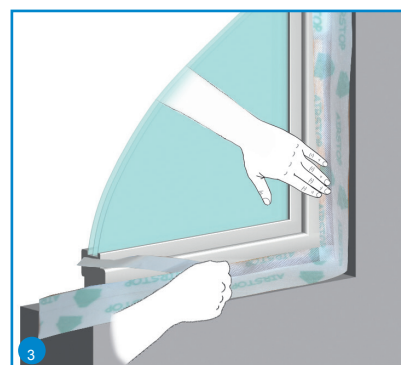
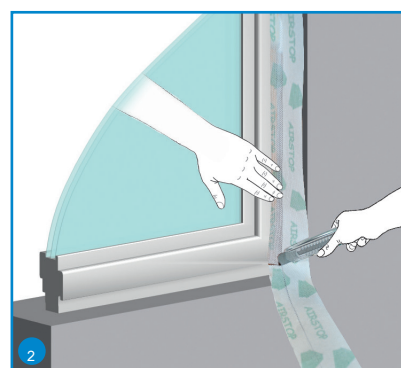
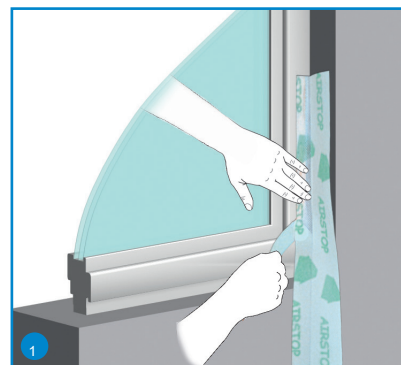
In the corner area the adhesive tape is to cut with a cutter and stick around the corner. If the tape does not sit right in the corner, can be reworked with UNI adhesive sealant or AIRSTOP Sealant SPRINT.

(3) around the window WORK

The window tape now further press against the window frame. form as described in section 2 of every corner.

(4) BRANCH LINER PULL AND BONDING

If the window band encircling glued to the window Stock and the joint insulation, disconnect the broad backing paper and press down the window band. The higher the pressure, the better the adhesion!



INFO:

+43 (0) 1624 608108

WWW.ISOCELL.COM

ISOCELL
VERDÄMMT BESSER