



OMEGA FB Window Tape

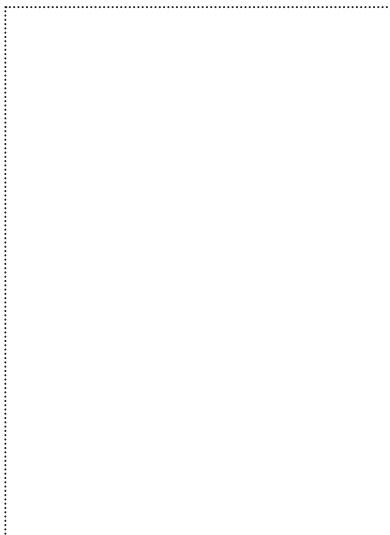
OMEGA FB Window Tape is a thin, flexible adhesive tape made from butyl rubber. The adhesive surface is equipped with an asymmetrically split PE liner. The slight overlap of the liners provides a finger lift to facilitate installation. The adhesive tape is used mainly for making the second water-bearing level below the window sill but also for other sealing tasks.

FIELD OF APPLICATION

- for quick and simple creation of a second water-bearing level below the window sill
- for outdoor use

ADVANTAGES

- protects the construction from damp
- easy to apply
- highly flexible
- split liner with finger lift



AVAILABLE IN THE FOLLOWING SIZES

Roll width	100 mm	130 mm	160 mm	200 mm	250 mm
Roll length	25 m	25 m	25 m	25 m	25 m
Liner split	30/70	30/100	30/130	30/170	30/220
Carton contents / rolls	2	2	2	1	1

PRODUKT DATA

Material	butyl-rubber adhesive tape combined with non woven fabric
Thickness	0,8 mm
Temperature resistance	- 40 °C - + 80 °C
Working temperature	- 5 °C - + 40 °C
UV resistance	4 months
Storage	2 years; cool and dry
Fire class	E

12.2019_EN

ISOCELL

GUIDELINES FOR USE

OMEGA FB Window Tape

The narrow side of OMEGA FB Window Tape is fixed to the lower area of the window frame and attached around the corners. The tape should be extended horizontally approx. 6 cm in the reveal. Then the wide liner is pulled off in order to attach the tape to the substrate. Excess material can simply be cut off and we recommend leaving a small extra length as drainage area or for attachment of plastering profiles. On very porous and highly absorbent surfaces such as concrete, plaster, untreated steel and rough wood we further recommend pre-treating the substrate with our ISOCELL primers.

(1)
Cut off the window tape allowing approx. 12 cm excess. Pull off the narrow liner from the adhesive strip and carefully press the adhesive strip onto the lower window frame. Direct bonding of the window sill is possible with UNI MS adhesive sealant

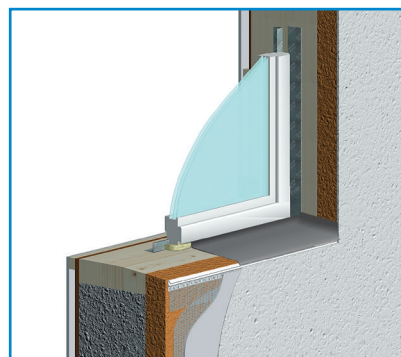
(2)
Pull up the window tape approx. 6 cm at both sides of the reveal and press on firmly.

(3)
Now pull off the second, wider liner and press the adhesive surface of the tape onto the lower window reveal, working from the centre and working to the left and to the right. While doing so press the flexible tape carefully into the corners and edges and pull up at the sides of the reveal. The edges can be implemented very well without voids using the pressing doctor blade.

(4)
When the tape has been cleanly fixed in one piece and worked into the corners a second water-bearing level results on which to mount the window sill. The window sill can be adhered directly to the non-woven surface with the UNI MS adhesive sealant.

RECOMMENDED ACCESSORIES

UNI Spray primer
Pressure squeegee
UNI MS Adhesive Sealant



ISOCELL GmbH & Co KG
Gewerbstraße 9
5202 NEUMARKT AM WALLERSEE | Österreich
Tel.: +43 6216 4108 | Fax: +43 6216 7979
office@isocell.at

ISOCELL SCHWEIZ AG
Herbergstrasse 29
9524 ZUZWIL | Suisse /Schweiz
Tel.: +41 71 544 47 20
office@isocell.ch

ISOCELL FRANCE
170 Rue Jean Monnet | ZAC de Prat Pip Sud
29490 GUIPAVAS | France
Tel.: +33 2 98 42 11 00 | Fax: +33 2 98 42 11 99
contact@isocell-france.fr

ISOCELL BUREEL BELGIË
Außenborner Weg 1 | Schoppen
4770 AMEL | Belgique
Tel.: +32 80 39 90 58 | Fax: +32 80 39 97 68
office@isocell.be

ISOCELL Sverige AB
Box 20059
161 02 BROMMA | Sverige
Tel.: +46 10 130 25 00
info@isocell.se

ISOCELL
www.isocell.com