

ISOWINDOW UVAU WS

The window tape two-way consists of a highly UV-resistant fleece backing that can be painted over and is coated with a heavy-duty adhesive. The back of the tape is completely adhesive and has separate liners. The adhesive strip covering the upper side can be attached directly onto the window frame without removing a liner, and the tape can therefore be totally concealed when installed. ISOWINDOW UVAU WS Window Tape is suitable for window installation conform to RAL and ÖNORM B 5320.

FIELD OF APPLICATION

- for window installation

ADVANTAGES

- „fingerlift“
- 12 month UV-resistance
- resistance to air and wind-driven rain
- soft, flexible structure
- extremely good adhesion on all kinds of window frames and various substrates, e.g. concrete, OSB, wood, vapour barriers
- Two-way adhesive coating for concealed installation
- Liner split
- can be plastered over and painted over

AVAILABLE IN THE FOLLOWING DIMENSIONS

Roll width	80 mm
Roll length	25 m
Backing strips	25 / 55
Rolls/carton	4

PRODUCT DATA

Material	flexible fleece, laminated air-tight
Working temperature	- 5 °C - + 40 °C
Temperature resistance	- 40 °C - + 80 °C (temporarily + 100°C)
UV stability	12 months
Storage	12 years; cool and dry
Colour	grey with black imprint
sd-value	0,19 m

GUIDELINES FOR USE

ISOWINDOW UVAU WS

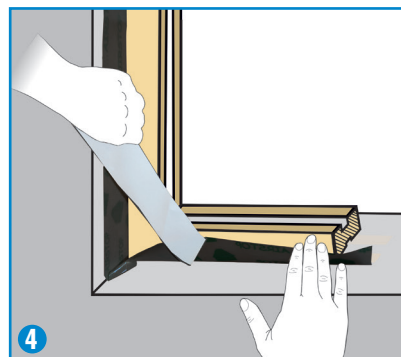
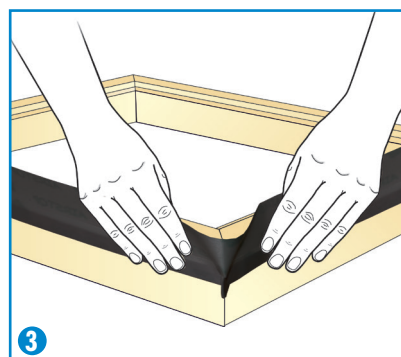
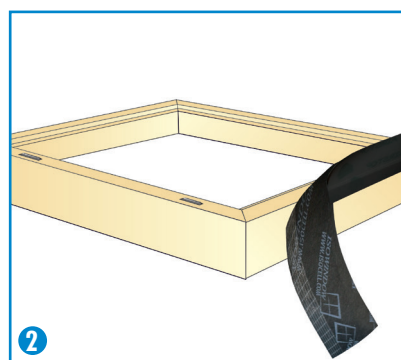
ISOWINDOW UVAU WS is fixed to the window reveal before the window is installed. The fleece side of the tape can be plastered over and painted over. The fully adhesive side is attached to masonry, wood, OSB or vapour barrier. The substrate should be sufficiently supporting (if necessary pre-treat surfaces with BUBI LF Primer or UNI Primer).

(1)
The fleece side of ISOWINDOW UVAU WS is coated with a narrow acrylic strip that is attached directly to the window frame without removing a liner. The fully adhesive back has a split liner.

(2)
Position the window frame with the outer side facing upwards. Carefully press the adhesive strip onto the window frame. Continue to roll out the ISOWINDOW UVAU WS and work as far as the corner.

(3)
A fold must be made at the corners. Do this by pressing the window tape firmly to the corner of the window frame and making a fold. The resulting corners serve as corner seals.

(4)
When the connection gap has been insulated, pull off the masking paper and press down the window tape. The more pressure used, the better the adhesion!



ISOCELL GmbH
Gewerbstraße 9
5202 NEUMARKT AM WALLERSEE | Österreich
Tel.: +43 6216 4108 | Fax: +43 6216 7979
office@isocell.at

ISOCELL SCHWEIZ AG
Herbergstrasse 29
9524 ZUZWIL | Suisse /Schweiz
Tel.: +41 71 544 47 20
office@isocell.ch

ISOCELL FRANCE
170 Rue Jean Monnet | ZAC de Prat Pip Sud
29490 GUIPAVAS | France
Tel.: +33 2 98 42 11 00 | Fax: +33 2 98 42 11 99
contact@isocell-france.fr

ISOCELL BUREEL BELGIË
Außenborner Weg 1 | Schoppen
4770 AMEL | Belgique
Tel.: +32 80 39 90 58 | Fax: +32 80 39 97 68
office@isocell.be

ISOCELL Sverige AB
Gamla Stallet | Stora Väsbys
194 37 UPPLANDS VÄSBY | Sverige
Tel.: +46 10 130 25 01
office@isocell.se

ISOCELL
www.isocell.com