

QUARTZ-ZINC® LIGHT GREY PRE-WEATHERED TITANIUM ZINC

QUARTZ-ZINC is a surface treated rolled zinc, alloyed with copper and titanium, compliant with the European standard EN 988 and with the more stringent Premium zinc, the VMZINC quality standard.

DESCRIPTION AND CHARACTERISTICS

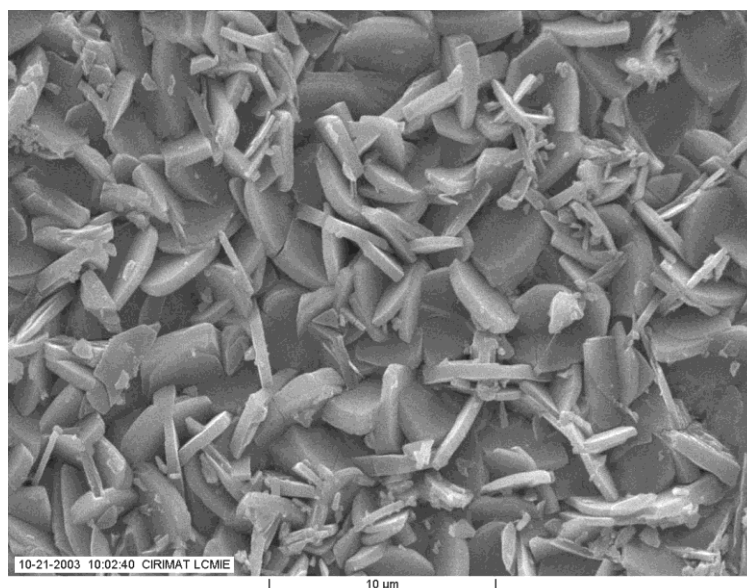
The pre-weathered patina of the ANTHRA-ZINC® is the result of a chemical process, which consists in the modification of the external surface of natural titanium zinc.

QUARTZ-ZINC® provides a uniform and homogeneous **light grey** colour, similar to the zinc natural patina color which forms on zinc after several months of atmospheric exposure. The chromatic co-ordinates of QUARTZ-ZINC® are $Y = 24 \pm 1$; $x = 0,32$; $y = 0,32$.

The mean characteristics of this thin conversion layer are the following:

Nature	: quadrihydric zinc phosphate $Zn_3(PO_4)_2 \cdot 4H_2O$ (hopeit)
Weight	: 35 mg/dm ²
Thickness	: about 1 micrometer
Solubility	: insoluble in water

The patina of QUARTZ-ZINC® is perfectly environment-friendly.





ENVIRONMENTAL PROPERTIES

QUARTZ-ZINC environmental qualities have been assessed through Life Cycle Analysis (LCA). The results, showing at the building scale the positive contribution of QUARTZ-ZINC to sustainability, are available through the following Environmental Product Declaration (EPD) – FDES (France), IBU (Germany), BRE Green guide (UK) – downloadable from national public database and/or from the VMZINC websites.

More information on QUARTZ-ZINC (condition of use, weathering,...) is available on VMZINC websites or from VMZINC offices.

**Department Head Quality
VM BUILDING SOLUTIONS**

A handwritten signature in black ink, appearing to read 'A. Juvet', is centered within a light gray rectangular box.

VM BUILDING SOLUTIONS

Tours Les Mercuriales - 40, rue Jean Jaurès - CS 20084
93176 Bagnolet Cedex - France
www.vmpzinc.com

VM BUILDING SOLUTIONS