

ISOWINDOW F11 IE (INTERIOR ONE-WAY)

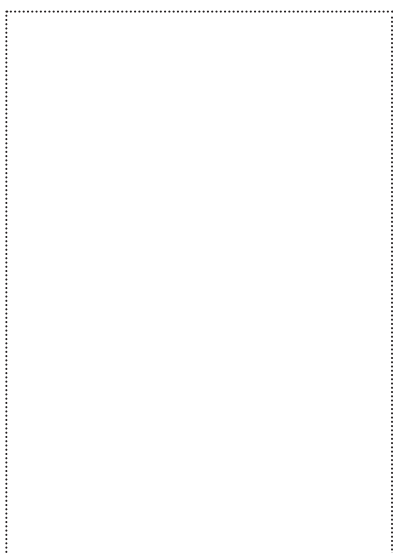
The window tape serves as seal for connecting building gaps in accordance with RAL guidelines and ÖNORM B 5320. The window tapes for indoor use are vapour retardant and airtight to 600 Pa and conform to ÖNORM EN 12207 and for outdoor use tapes are vapour permeable and resistant to driven rain to 600 Pa and conform to ÖNORM EN 12208. ISOWINDOW F11 consists of a 3-layer fleece that can be plastered over and has two acrylic adhesive strips on one side.

FIELD OF APPLICATION

- for window installation
- for indoor use

ADVANTAGES

- strong bonding of the adhesive acrylic strip on all types of window frame and on a variety of substrates such as OSB, wood, vapour retarders, ...
- tear-resistant and robust
- can be plastered over and painted over
- compatible with acrylic glass and poly carbonate



AVAILABLE IN THE FOLLOWING SIZES

Roll width	50 mm	75 mm	100 mm	150 mm
Roll length	25/50 m	25/50 m	25/50 m	25/50 m
Carton contents / rolls	7	5	3	2

PRODUKT DATA

Material	PP - fleece + alu coating
Thickness	0,52 mm
Fire performance	B2 / E
UV resistance	3 months
Storability	12 months
Storage	(+ 10 °C - + 25 °C) warm and dry
Working temperature	- 5 °C - + 40 °C
Temperature resistance	- 40 °C - + 80 °C
SD-Value	40 m

ISOCELL

GUIDELINES FOR USE

ISOWINDOW F11 IE (INTERIOR ONE-WAY)

ISOWINDOW F11 window tape one-way (Interior or Exterior) are attached to the window casement after the windows have been fitted. The fleece side of the tape can be plastered over and painted over and must face outwards. The aluminium-clad or white side is attached to the wall, wood, OSB or vapour barrier using acryl adhesive strips. The materials used must be free from dust and grease and substrates must be dry and supporting.

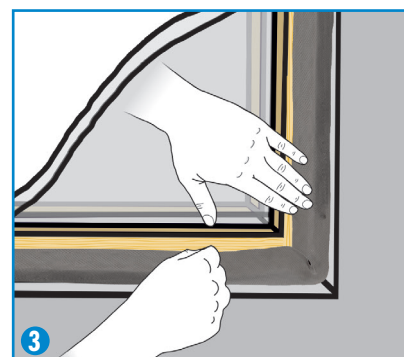
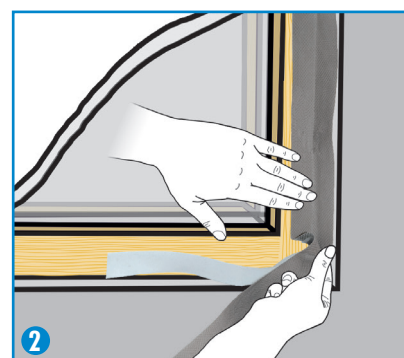
On very porous and highly absorbent substrates such as concrete, plaster, uncoated steel, untreated wood, we recommend priming with UNI PRIMER or BUBI LF Bonding Primer. The side of the tape that is covered with fleece can be plastered over with standard materials or painted over with dispersion coating. If a foil was supposed to be covered with plaster, the conglutination with the underground has to be done over the full area of the tape.

(1)
The window tape is cut allowing approx. 12 cm excess length. Pull off the backing paper from the adhesive tape and carefully press the attachment strips on to the window frame.

(2)
Make an 'ear' (fold, loop) at the corners by pressing the window tape firmly to as far as about 2cm from the corner, then slightly lifting it and turning it 90°.

(3)
Now continue to press the window tape onto the window frame. The 'ear' created will seal the corners perfectly. Repeat this procedure at every corner. Fill the connection joint with foam or with insulation material (e.g. ISOWINDOW Insulating Rope, ISOWINDOW Soft Cell Foam).

(4)
When the window tape has been fixed all around the casement and the joint insulated, pull off the backing paper from the acryl strip and apply pressure to the window tape. The greater the pressure applied, the better the adhesion!



ISOCELL GmbH
Gewerbestraße 9
5202 NEUMARKT AM WALLERSEE | Österreich
Tel.: +43 6216 4108 | Fax: +43 6216 7979
office@isocell.at

ISOCELL SCHWEIZ AG
Herbergstrasse 29
9524 ZUZWIL | Suisse /Schweiz
Tel.: +41 71 544 47 20
office@isocell.ch

ISOCELL FRANCE
170 Rue Jean Monnet | ZAC de Prat Pip Sud
29490 GUIPAVAS | France
Tél.: +33 2 98 42 11 00 | Fax: +33 2 98 42 11 99
contact@isocell-france.fr

ISOCELL BUREEL BELGIË
Außenborner Weg 1 | Schoppen
4770 AMEL | Belgique
Tel.: +32 80 39 90 58 | Fax: +32 80 39 97 68
office@isocell.be

ISOCELL Sverige AB
Gamla Stallet | Stora Wäsby
194 37 UPPLANDS VÄSBY | Sverige
Tel.: +46 10 130 25 01
office@isocell.se

ISOCELL
www.isocell.com