

# ISOWINDOW F11 AE (EXTERIOR ONE-WAY)

The window tape serves as seal for connecting building gaps in accordance with RAL guidelines and ÖNORM B 5320. The window tapes for indoor use are vapour retardant and airtight to 600 Pa and conform to ÖNORM EN 12207 and for outdoor use tapes are vapour permeable and resistant to driven rain to 600 Pa and conform to ÖNORM EN 12208. ISOWINDOW F11 consists of a 3-layer fleece that can be plastered over and has two acrylic adhesive strips on one side.

## FIELD OF APPLICATION

- for window installation
- for outdoor use

## ADVANTAGES

- strong adhesion of the mounting strip to all kinds of window frames
- tear-resistant and robust
- can be plastered over and painted over
- compatible with acryl glass and poly carbonate



## AVAILABLE IN THE FOLLOWING SIZES

|                         |         |         |         |         |
|-------------------------|---------|---------|---------|---------|
| Roll width              | 50 mm   | 75 mm   | 100 mm  | 150 mm  |
| Roll length             | 25/50 m | 25/50 m | 25/50 m | 25/50 m |
| Carton contents / rolls | 7       | 5       | 3       | 2       |

## PRODUKT DATA

|                        |                                  |
|------------------------|----------------------------------|
| Material               | PP - fleece                      |
| Thickness              | 0,6 mm                           |
| Fire performance       | B2 / E                           |
| UV resistance          | 2 months                         |
| Storability            | 12 months                        |
| Storage                | (+ 10 °C - + 25 °C) warm and dry |
| Working temperature    | - 5 °C - + 40 °C                 |
| Temperature resistance | - 40 °C - + 80 °C                |
| SD-Value               | 0,02 m                           |

# ISOCELL

# GUIDELINES FOR USE

## ISOWINDOW F11 (EXTERIOR ONE-WAY)

ISOWINDOW F11 window tape one-way (Interior or Exterior) are attached to the window casement after the windows have been fitted. The light-coloured fleece side of the tape can be plastered over and painted over and must face outwards. The aluminium-clad or white side is attached to the wall, wood, OSB or vapour barrier using acryl adhesive strips. The materials used must be free from dust and grease and substrates must be dry and supporting.

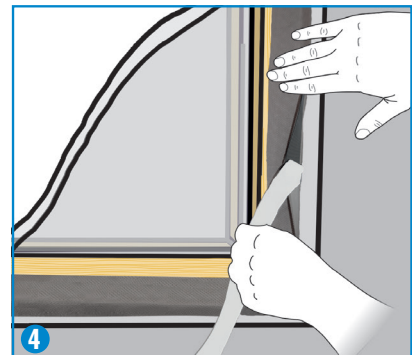
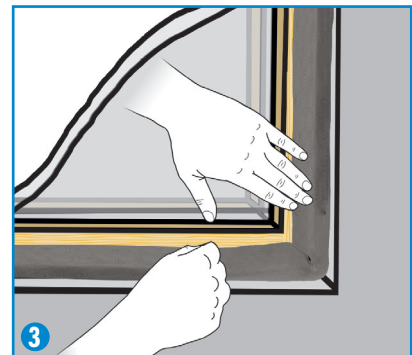
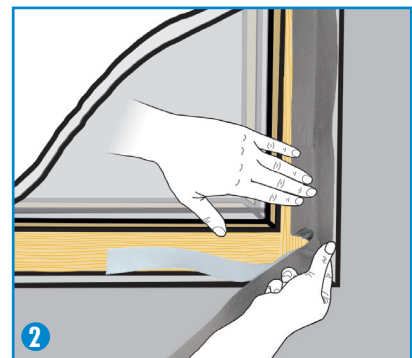
On very porous and highly absorbent substrates such as concrete, plaster, uncoated steel, untreated wood, we recommend priming with UNI PRIMER or BUBI LF Bonding Primer. The side of the tape that is covered with fleece can be plastered over with standard materials or painted over with dispersion coating. If a foil was supposed to be covered with plaster, the conglutination with the underground has to be done over the full area of the tape.

**(1)**  
Cut the window tape with approx. 12cm extra length. Pull the masking paper off the adhesive strip and press the adhesive tape carefully onto the window frame.

**(2)**  
Make a fold or loop at the corners. To do so, press the window tape firmly to the window frame as far as the corner, then lift slightly, push the material along and turn 90°.

**(3)**  
Now continue to press the window tape onto the window frame. The 'corner' fold seals the corners optimally. Do this at every corner. Fill the connection joint with foam or with insulation material (e.g. ISOWINDOW Insulating Rope, ISOWINDOW Soft Cell Foam).

**(4)**  
When the window tape has been fixed all around the casement and the joint insulated, pull off the backing paper from the acryl strip and apply pressure to the window tape. The greater the pressure applied, the better the adhesion!



ISOCELL GmbH  
Gewerbestraße 9  
5202 NEUMARKT AM WALLERSEE | Österreich  
Tel.: +43 6216 4108 | Fax: +43 6216 7979  
office@isocell.at

ISOCELL SCHWEIZ AG  
Herbergstrasse 29  
9524 ZUZWIL | Suisse /Schweiz  
Tel.: +41 71 544 47 20  
office@isocell.ch

ISOCELL FRANCE  
170 Rue Jean Monnet | ZAC de Prat Pip Sud  
29490 GUIPAVAS | France  
Tél.: +33 2 98 42 11 00 | Fax: +33 2 98 42 11 99  
contact@isocell-france.fr

ISOCELL BUREEL BELGIË  
Außenborner Weg 1 | Schoppen  
4770 AMEL | Belgique  
Tel.: +32 80 39 90 58 | Fax: +32 80 39 97 68  
office@isocell.be

ISOCELL Sverige AB  
Gamla Stallet | Stora Wäsby  
194 37 UPPLANDS VÄSBY | Sverige  
Tel.: +46 10 130 25 01  
office@isocell.se

**ISOCELL**  
[www.isocell.com](http://www.isocell.com)